

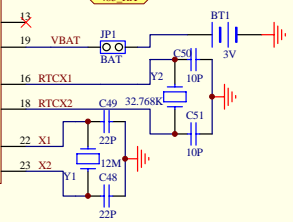
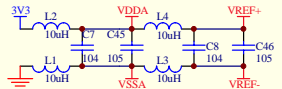
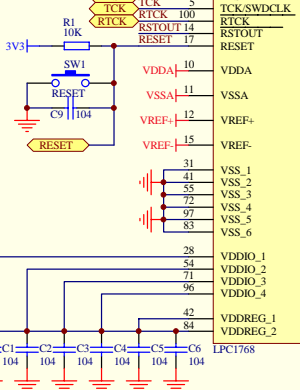
Title		
www.PowerMCU.com		
Size	Number	Revision
A4		
Date:	11-Dec-2010	Sheet of
File:	冯浩宇电子HY-LandTigerLandTiger.Ddb	Drawn By:

CPU

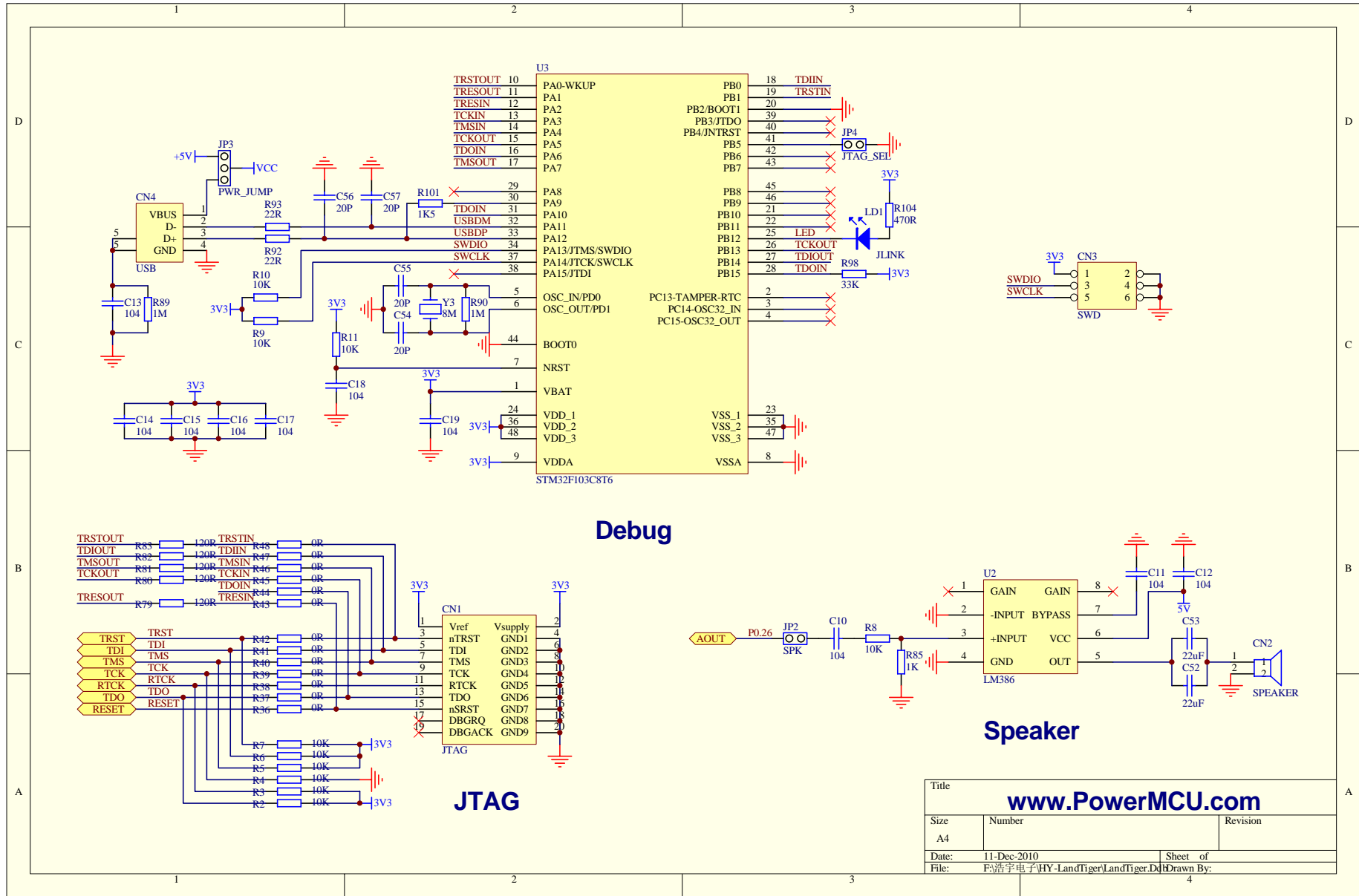
P1		5V	
1	GND		
2	TMS		
3	GND		
4	TCK		
5	P0.26		
6	P0.25		
7	P0.24		
8	P0.23		
9	VDDA		
10	VSSA		
11	VREF+		
12	3V3		
13	RS[OUT]		
14	VREF-		
15	GND		
16	RESET		
17	3V3		
18	VBAT		
19	P1.31		
20	P1.30		
21	3V3		
22	GND		
23	P0.28		
24	P0.27		
25	P3.26		
26	P3.25		
27	3V3		
28	P0.29		
29	P0.30		
30	GND		
31	P1.18		
32	P1.19		
33	P1.20		
34	P1.21		
35	P1.22		
36	P1.23		
37	P1.24		
38	P1.25		
39	P1.26		
40	GND		
41	3V3		
42	P1.27		
43	P1.28		
44	P1.29		
45	P0.10		
46	P0.11		
47	P0.12		

U1		P2	
CAN1_RX	P0.0	46	P1.0/ENET_TXD0
CAN1_TX	P0.1	47	P1.1/ENET_TXD1
UART0_TX	P0.2	98	P1.4/ENET_TX_EN
UART0_RX	P0.3	99	P1.8/ENET_CRS
CAN2_RX	P0.5	80	P1.9/ENET_RXD0
CAN2_TX	P0.6	79	P1.10/ENET_RXD1
TP_CS	P0.7	78	P1.14/ENET_RX_ER
SCK1	P0.8	77	P1.15/ENET_REF_CLK
MISO1	P0.9	76	P1.16/ENET_MDC
MOSI1	P0.10	48	P1.17/ENET_MDIO
UART2_TX	P0.11	49	P1.18/ENET_MDC
UART2_RX	P0.15	62	P1.19/ENET_MDC
SCK	P0.16	63	P1.20/MC/USB_PPWR1/2/SCK0
DF_CS	P0.17	61	P1.21/MC/ABORT/PWM1.3/SSEL0
MISO	P0.18	60	P1.22/MC/USB_PWRD/MAT1.0
MOSI	P0.19	59	P1.23/MC/FB1/PWM1.4/MOSI0
LCD_EN	P0.20	58	P1.24/MC/FB2/PWM1.5/MOSI0
LCD_LE	P0.21	57	P1.25/MC1A/MAT1.1
LCD_DIR	P0.22	56	P1.26/MC1B/PWM1.6/CAP0.0
LCD_CS	P0.23	9	P1.27/CLKOUT/USB_OVRC/CAP0.1
LCD_RS	P0.24	8	P1.28/MC2A1.0/MAT0.0
LCD_WR	P0.25	7	P1.29/MC2B/PCAP1.1/MAT0.1
LCD_RD	P0.26	6	P1.30/VBUS/AD0.4
AOUT	P0.27	25	P1.31/SCK1/AD0.5
SDA	P0.28	24	P2.0/PWM1.1/TXD1
SCL	P0.29	29	P2.1/PWM1.2/RXD1
USB_D-	P0.30	30	P2.2/PWM1.3/CTS1/TRACEDATA3
USB_D+	P0.30	30	P2.3/PWM1.4/DC1/TRACEDATA2
TDO	TDO	1	P2.4/PWM1.5/DSR1/TRACEDATA1
TDI	TDI	2	P2.5/PWM1.6/DTR1/TRACEDATA0
TMS	TMS	3	P2.6/PCAP1.0/R1/TRACECLK
TRST	TRST	4	P2.7/RD2/RTS1
TCK	TCK	5	P2.8/TD2/TXD2
RTCK	RTCK	100	P2.9/USB_CONNECT/RXD2
RSTOUT	RSTOUT	14	P2.10/EINT0/NMI
RESET	RESET	17	P2.11/ISP
VDDA	VDDA	10	P2.12/KEY1
VSSA	VSSA	11	P2.13/KEY2
VREF+	VREF+	12	TP_INT
VREF-	VREF-	15	
VSS_1	VSS_1	31	P3.25
VSS_2	VSS_2	41	P3.26
VSS_3	VSS_3	55	SD_CID
VSS_4	VSS_4	72	SD_PWR
VSS_5	VSS_5	83	485_TX
VSS_6	VSS_6	83	485_RX
VDDIO_1	VDDIO_1	28	
VDDIO_2	VDDIO_2	54	
VDDIO_3	VDDIO_3	71	
VDDIO_4	VDDIO_4	96	
VDDREG_1	VDDREG_1	42	
VDDREG_2	VDDREG_2	84	

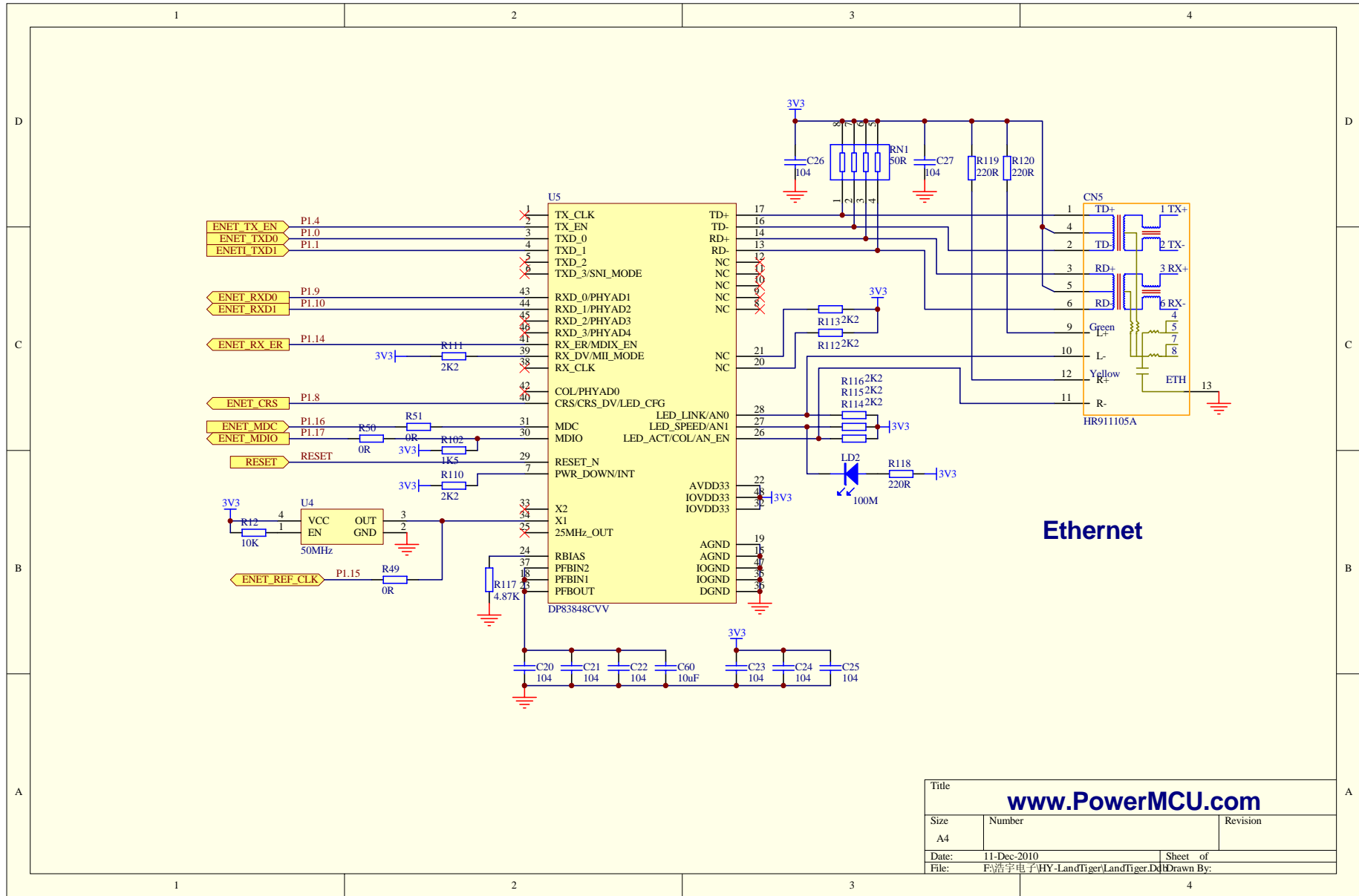
P2		5V	
1	P0.3		
2	P0.2		
3	GND		
4	3V3		
5	P1.0		
6	P1.1		
7	P1.4		
8	P1.8		
9	P1.9		
10	P1.10		
11	P1.14		
12	P1.15		
13	P1.16		
14	P1.17		
15	P1.18		
16	P1.19		
17	P1.20		
18	P1.21		
19	P1.22		
20	P1.23		
21	P1.24		
22	P1.25		
23	P1.26		
24	P1.27		
25	P1.28		
26	P1.29		
27	P1.30		
28	P1.31		
29	P2.0		
30	P2.1		
31	P2.2		
32	P2.3		
33	P2.4		
34	P2.5		
35	P2.6		
36	P2.7		
37	P2.8		
38	P2.9		
39	P2.10		
40	P2.11		
41	P2.12		
42	P2.13		
43	P3.25		
44	P3.26		
45	P4.28		
46	P4.29		
47	NC		
48	VBAT		
49	RTCX1		
50	RTCX2		
51	XTAL1		
52	XTAL2		



Title		
www.PowerMCU.com		
Size	Number	Revision
B		
Date:	11-Dec-2010	Sheet of
File:	5号清字电子HY-Land Tiger/Land Tiger.D	Drawn By:

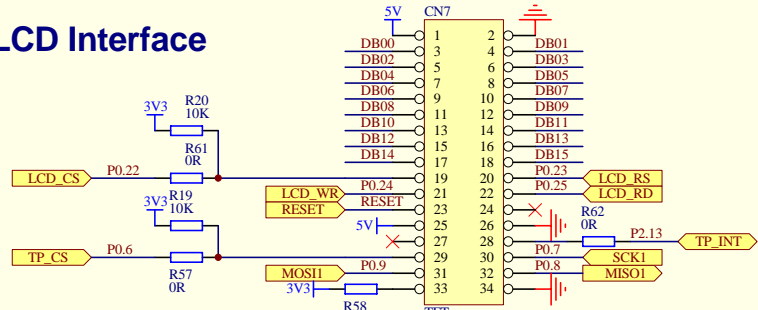


Title		
www.PowerMCU.com		
Size	Number	Revision
A4		
Date:	11-Dec-2010	Sheet of
File:	F:\浩宇电子\HY-LandTiger\LandTiger.Dd	Drawn By:
		4

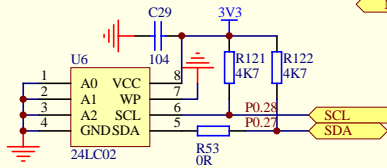


Title		
www.PowerMCU.com		
Size	Number	Revision
A4		
Date:	11-Dec-2010	Sheet of
File:	F:\浩宇电子\HY-LandTigerLandTiger.Dd	Drawn By:

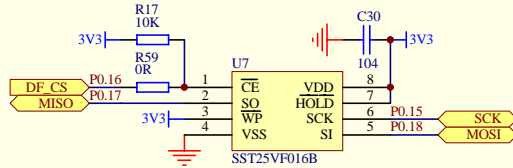
LCD Interface



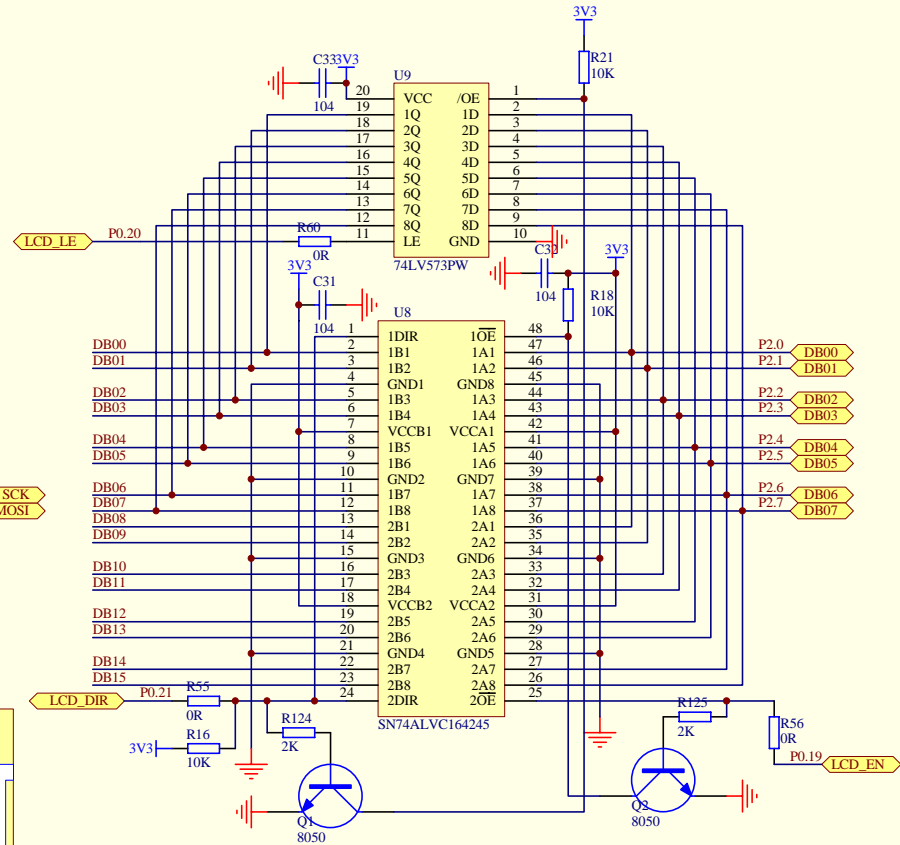
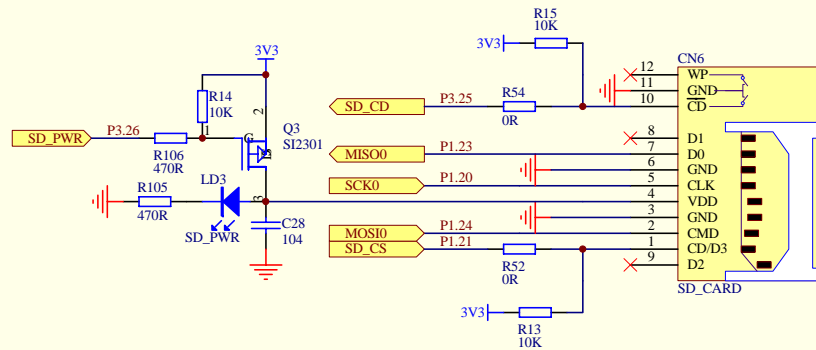
EEPROM



SPI_FLASH



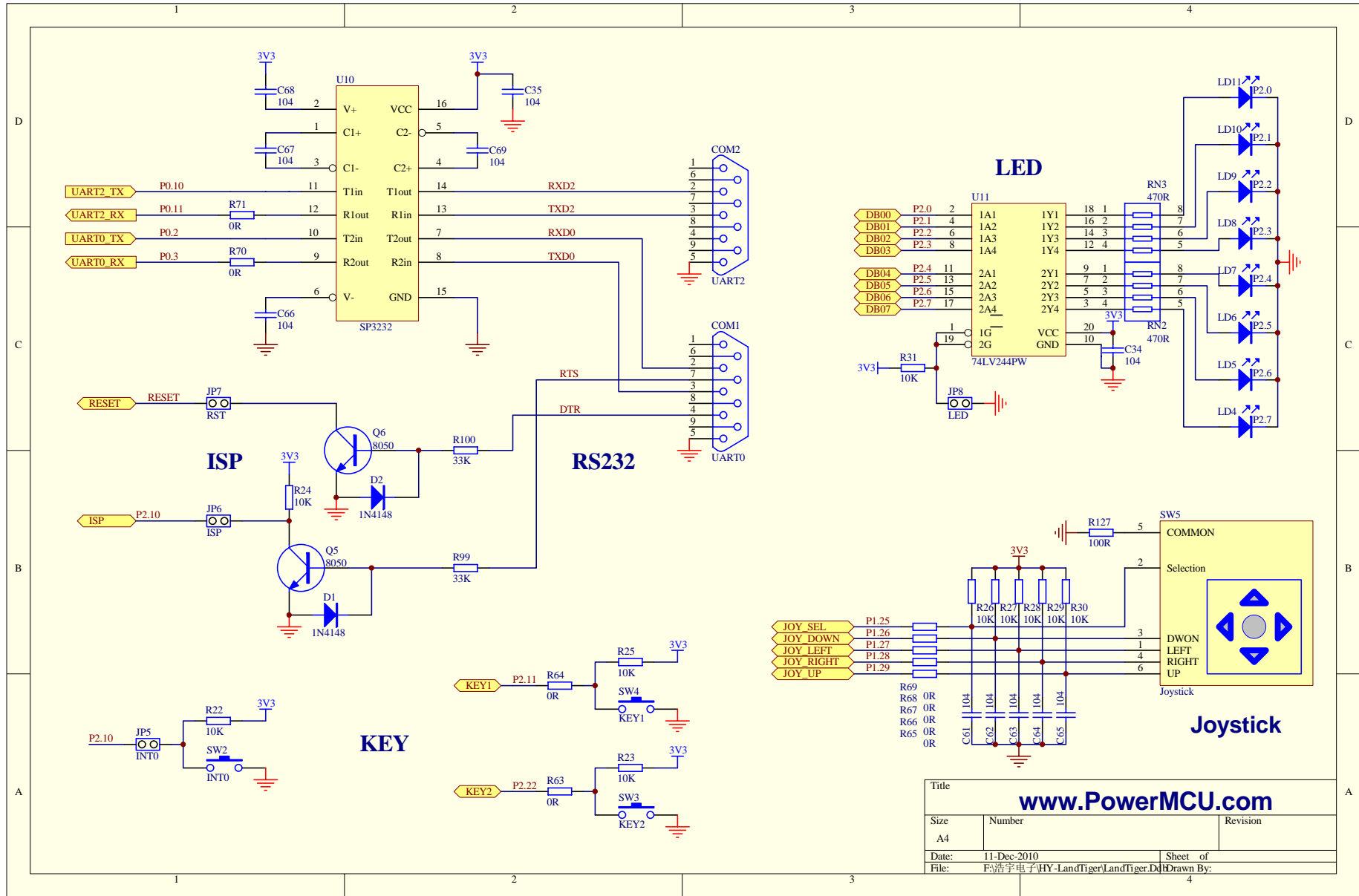
SD_CARD



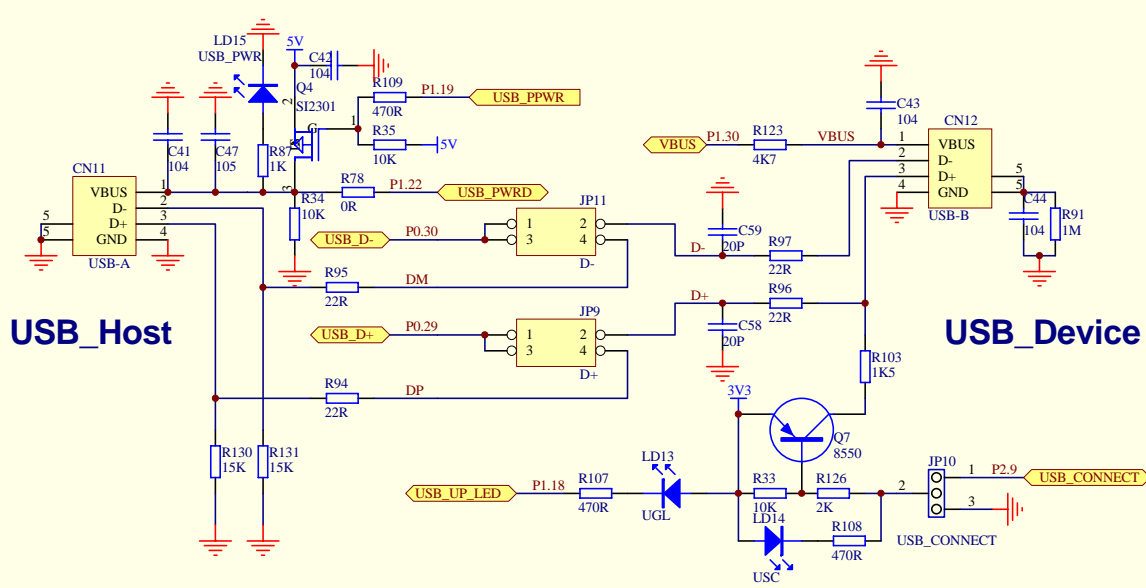
LCD 8-bit to 16-bit Conversion

LCD_DIR = 1 A->B
 LCD_DIR = 0 B->A

Title			www.PowerMCU.com		
Size	Number	Revision			
A4					
Date:	11-Dec-2010	Sheet		of	
File:	F:\浩宇电子\HY-LandTigerLandTiger.Dd	Drawn By:			

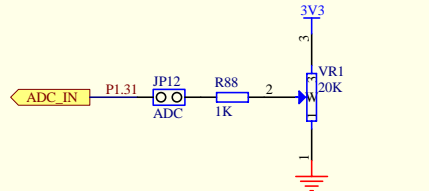


Title		
www.PowerMCU.com		
Size	Number	Revision
A4		
Date:	11-Dec-2010	Sheet of
File:	F:\浩宇电子\HY-LandTigerLandTiger.Dd	Drawn By:

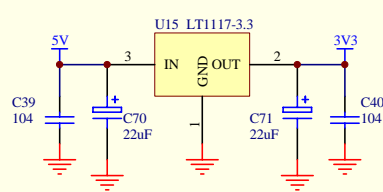


USB_Host

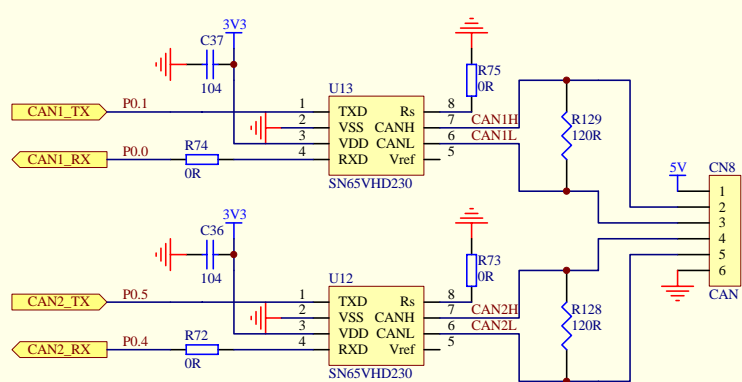
USB_Device



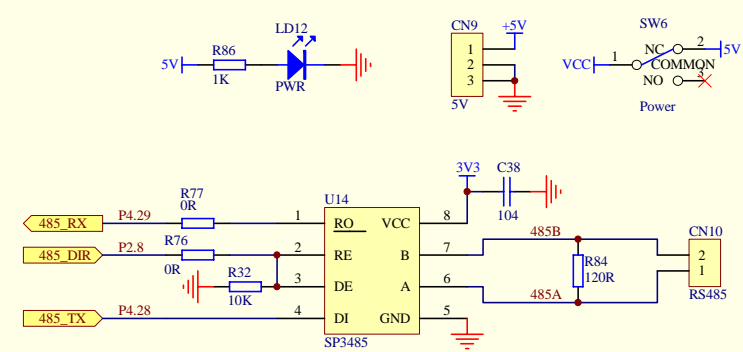
Potentiometer



Power



CAN_BUS



RS485

Title		
www.PowerMCU.com		
Size	Number	Revision
A4		
Date:	11-Dec-2010	Sheet of
File:	F:\浩宇电子\HY-LandTiger\LandTiger.Dd	Drawn By: