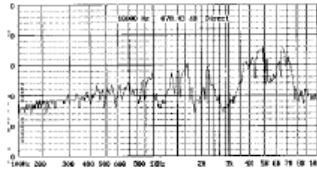


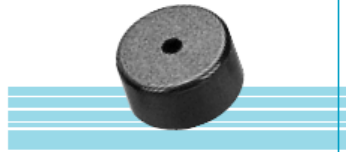
KPT-1410 series Piezo Transducer

FREQUENCY RESPONSE
[actual curve of type]



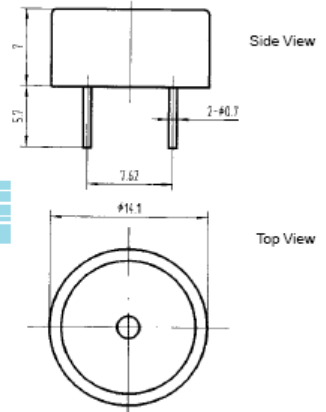
applied voltage: 12Vp-p, 1/2 duty, square wave distance for measurement: 10cm

Model No	KPT-1410
Rated Voltage	12Vp-p Square Wave
Max. Allowable Voltage	30Vp-p Square Wave
Max. Rated Current	2mA at 4.0 KHz/12Vp-p Square Wave
Min Sound Pressure Level	80dB at 4.0 KHz/12Vp-p Square Wave/10cm
Resonant Frequency	4.0 ± 0.5 KHz
Operating Temperature	-20~+80 °C
Weight	1g



color Black
PBT Housing Material
Pin Terminal

DIMENSIONS



all dimensions are in mm

* Value applying at rated voltage