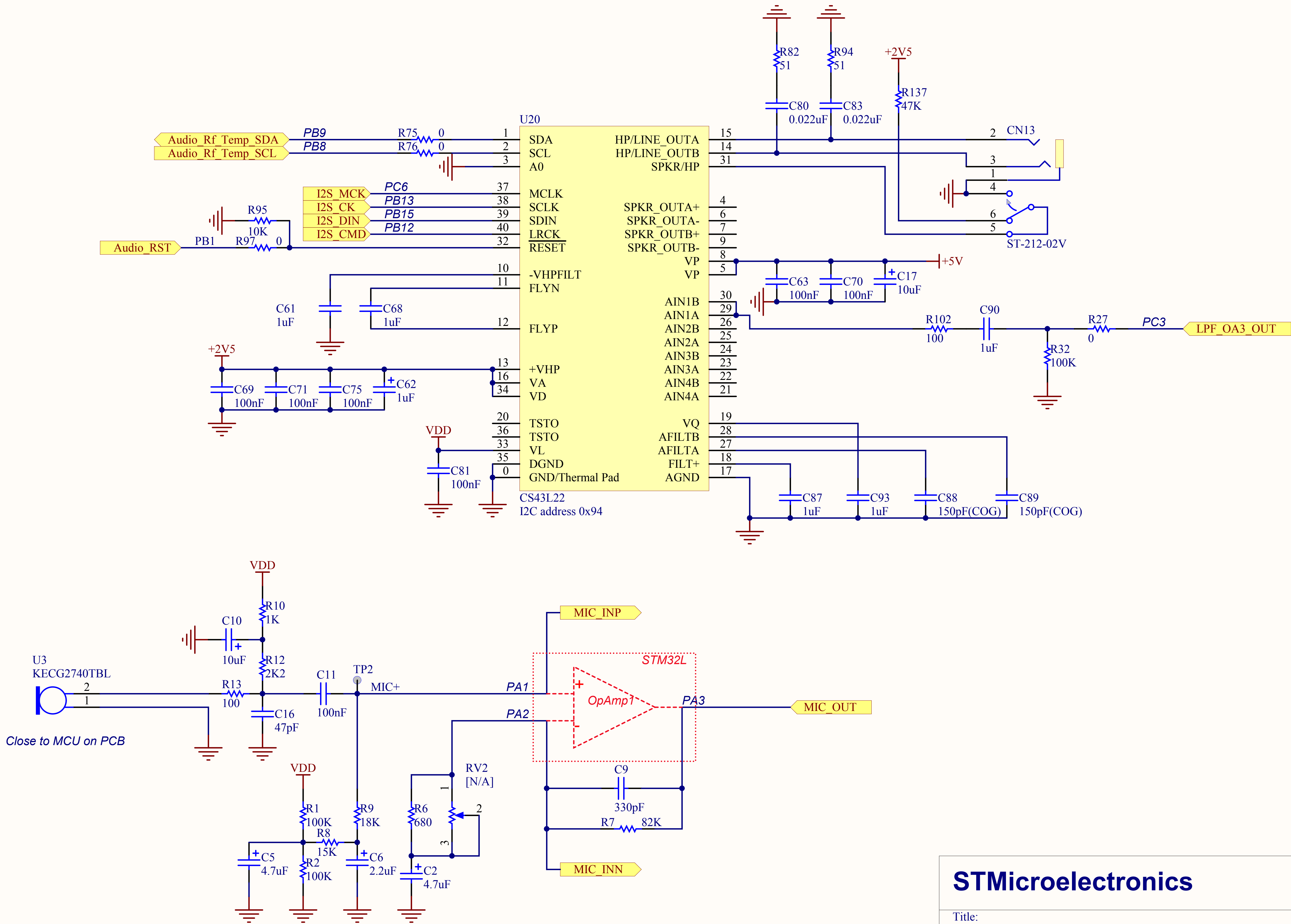


Note1: All text in the each sheet is in *Italic* format to be different with Net label.
Note2: Version upgrade from B.2 to B.3 due to USB external pull-up circuit(R164-R168,T4-T5) was removed.But these components' footprints are still on PCB.

STMicroelectronics

Title:
STM32L152D-EVAL

Number:*MB964* | Rev: B.3 | Date: 2/3/2012 | Sheet *1* of *14*



STMicroelectronics

Title:
STM32L152D-EVAL AUDIO

Number:MB964 Rev: B.3 Date:2/3/2012 Sheet3 of 14

A

B

C

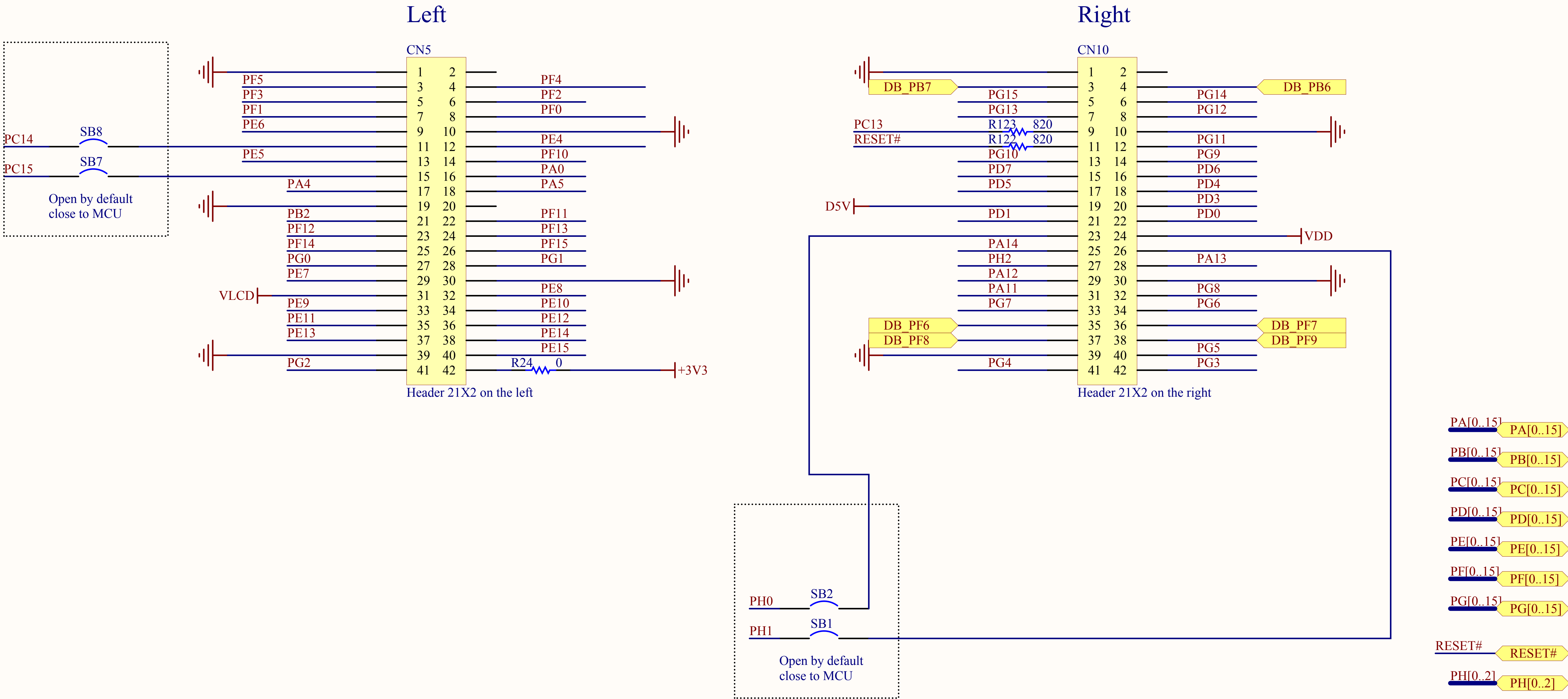
D

A

B

C

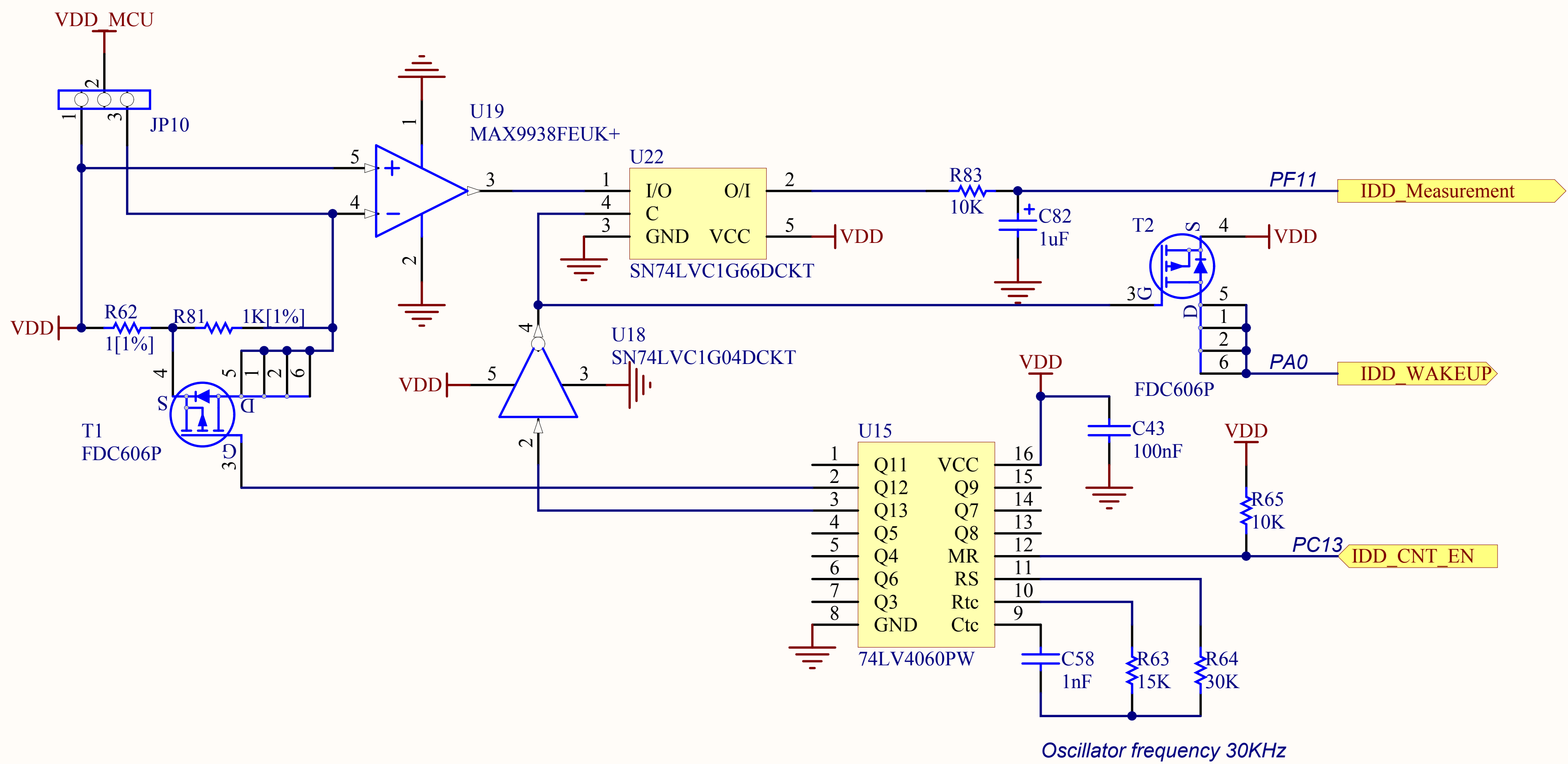
D



STMicroelectronics

Title:
STM32L152D-EVAL Extension Connector

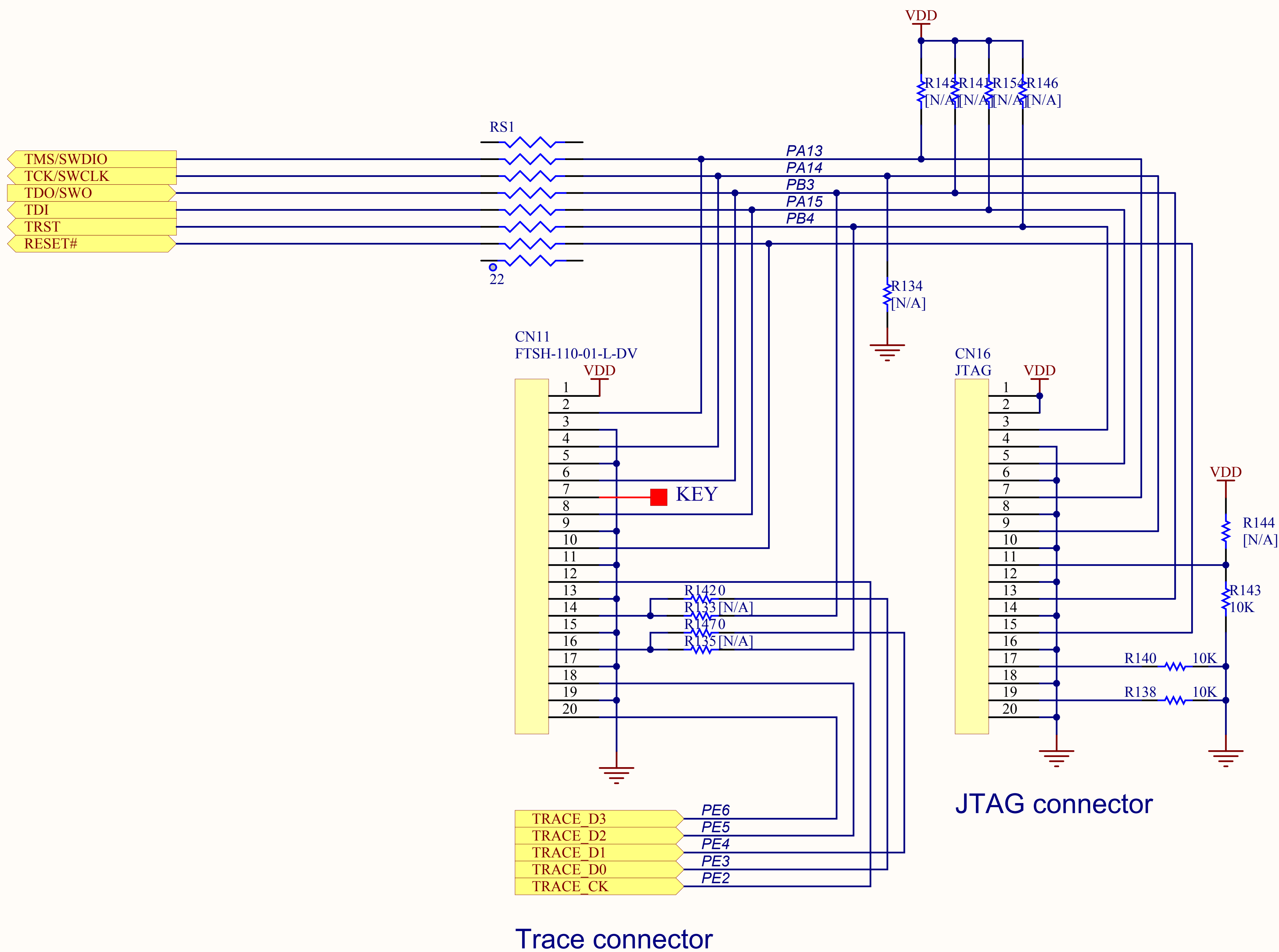
Number:MB964 Rev: B.3 Date:2/3/2012 Sheet6 of 14

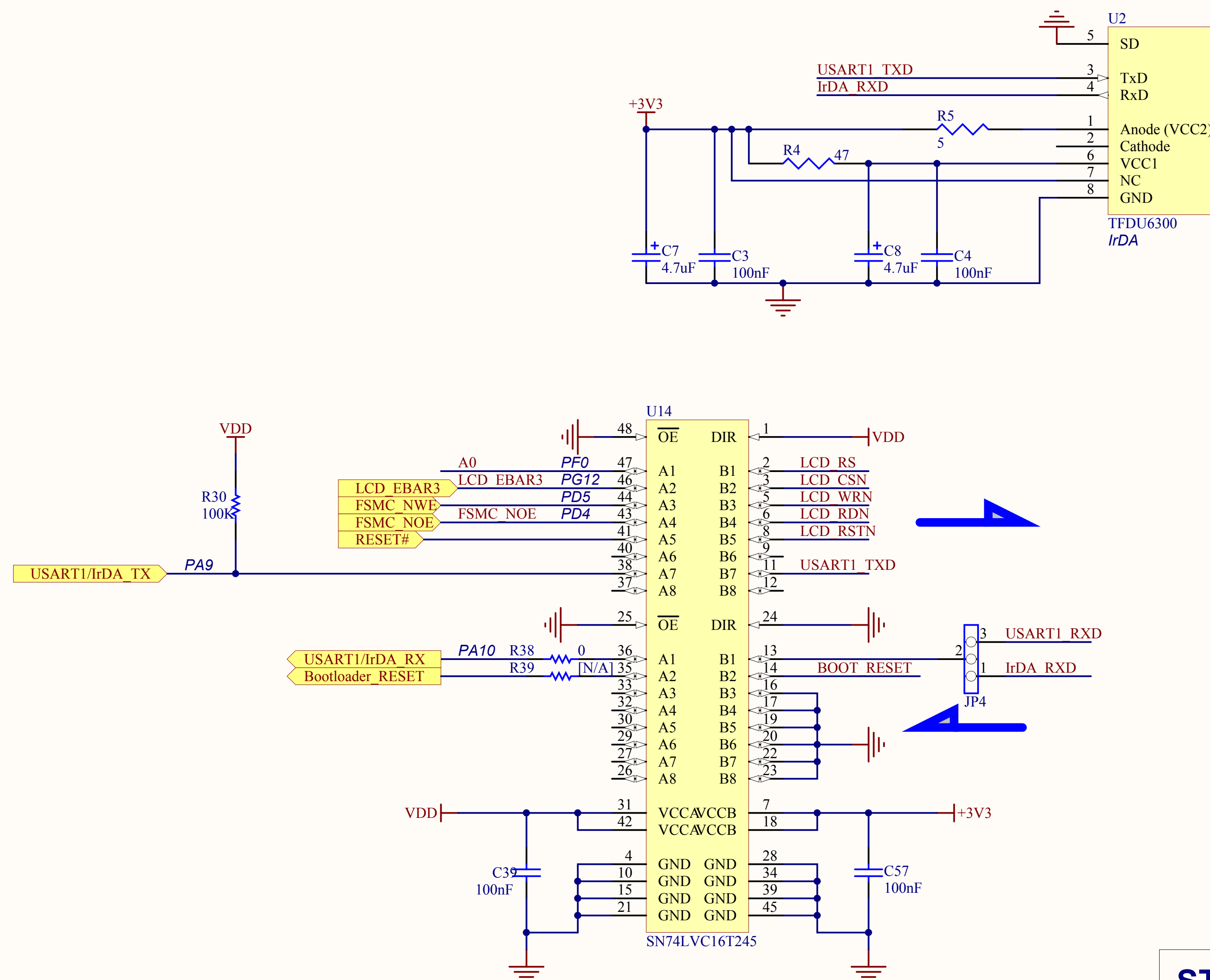
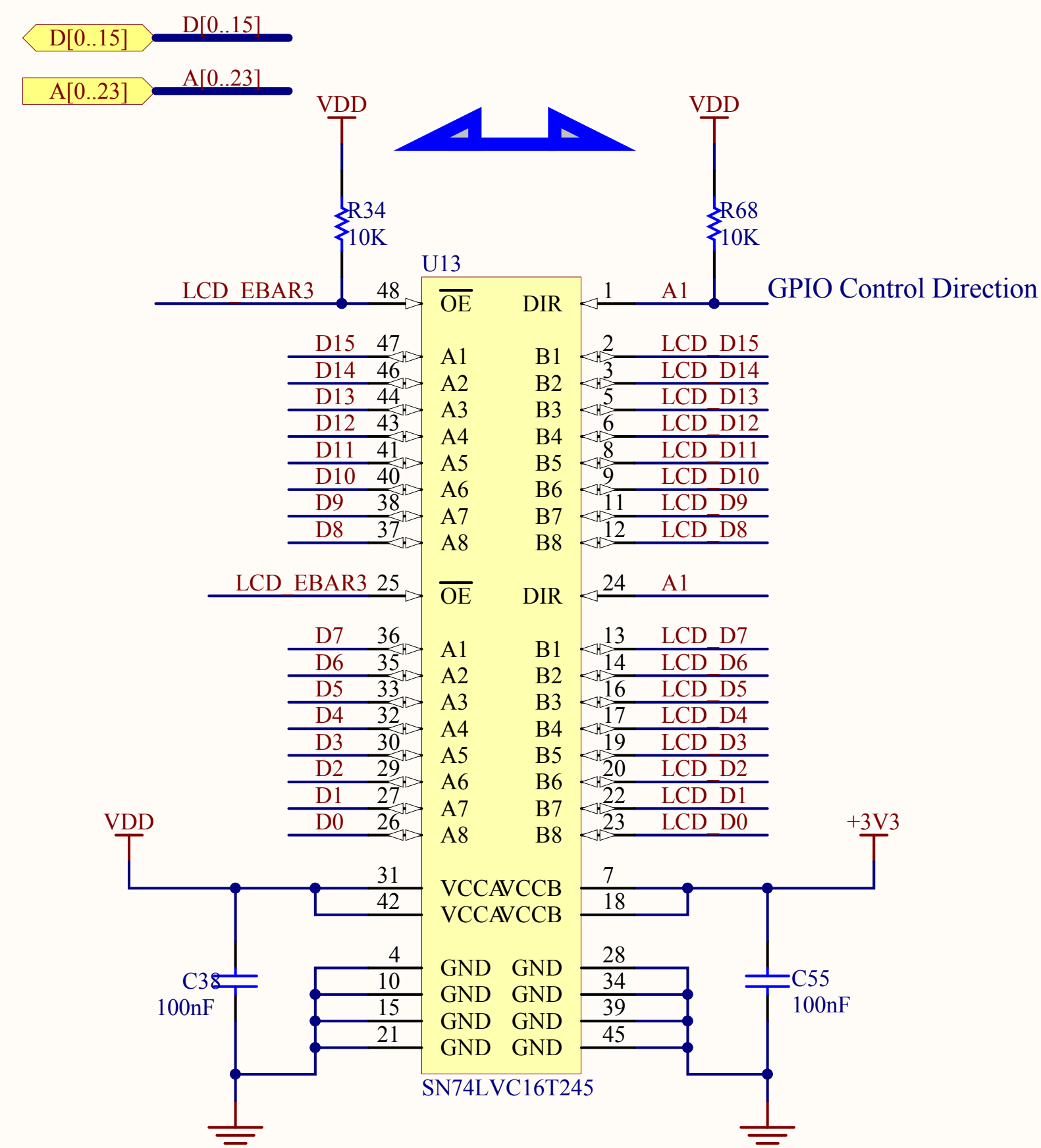
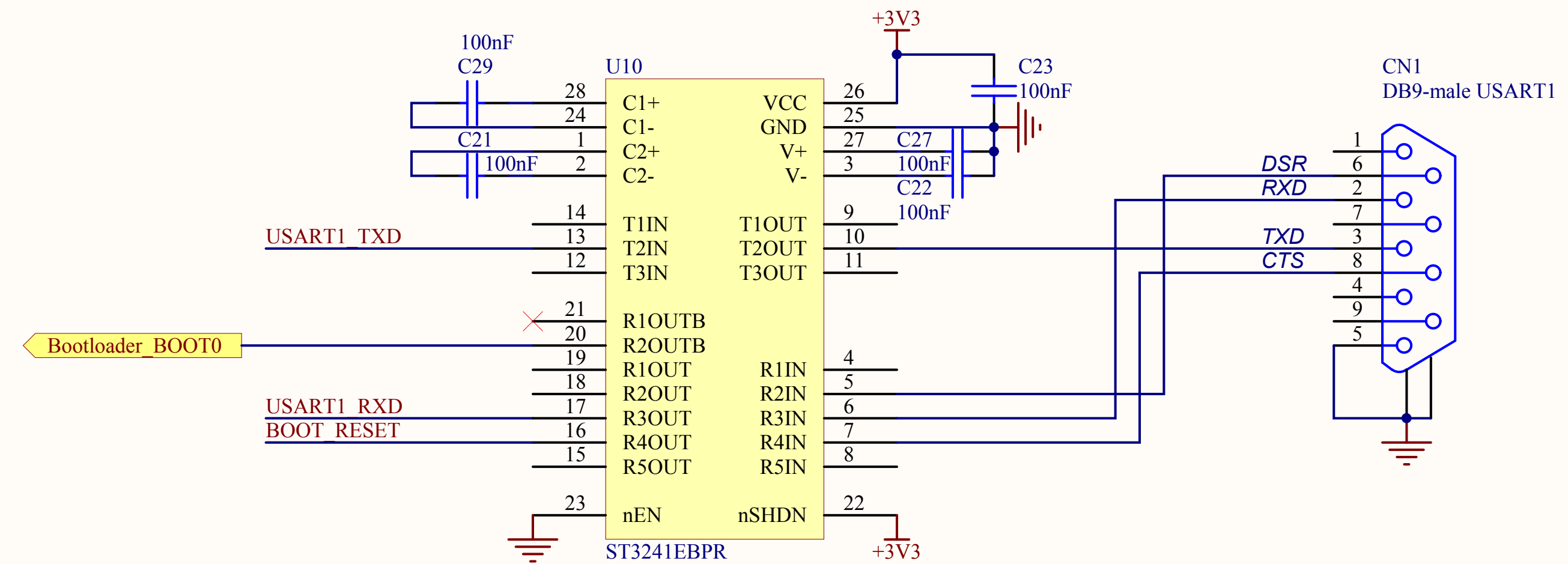
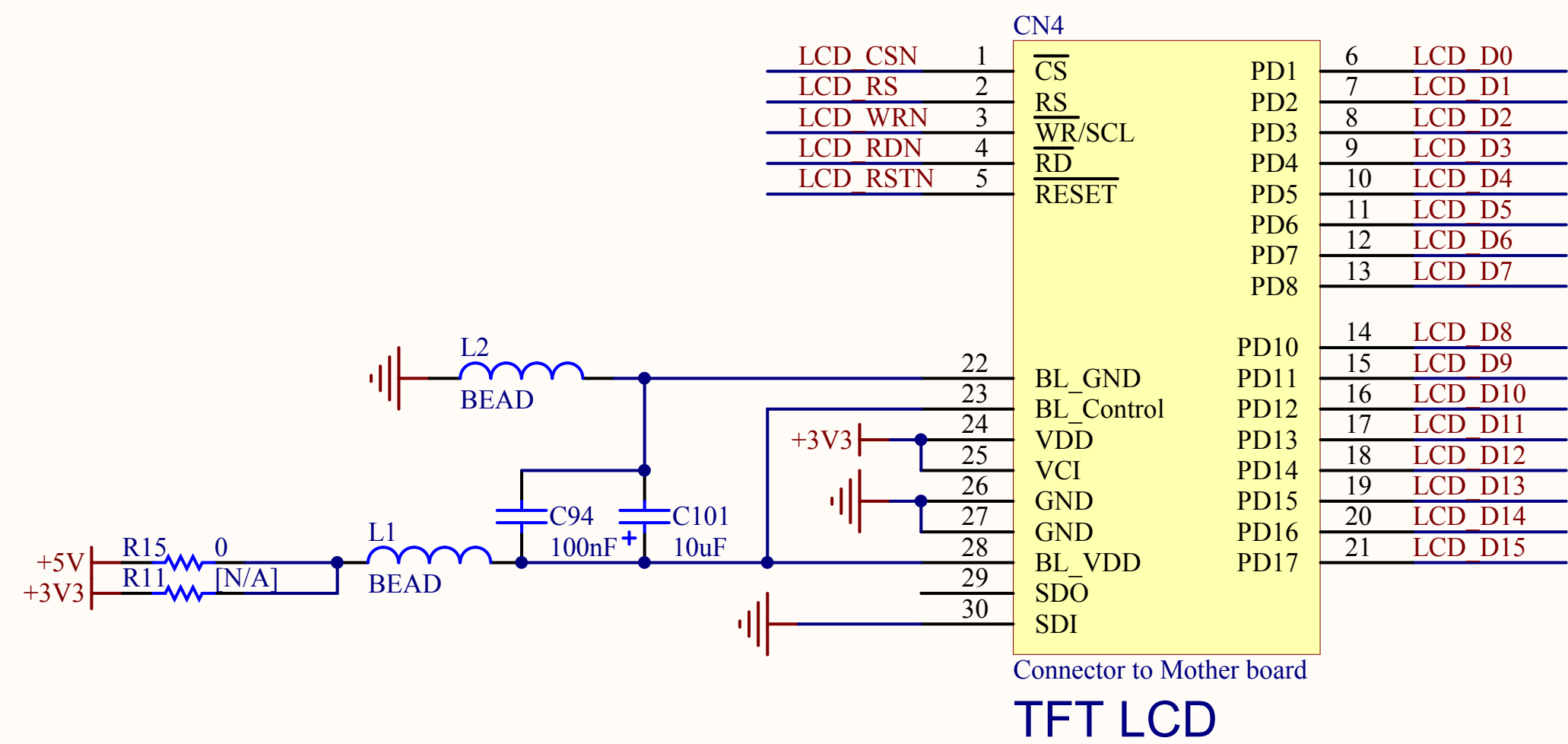


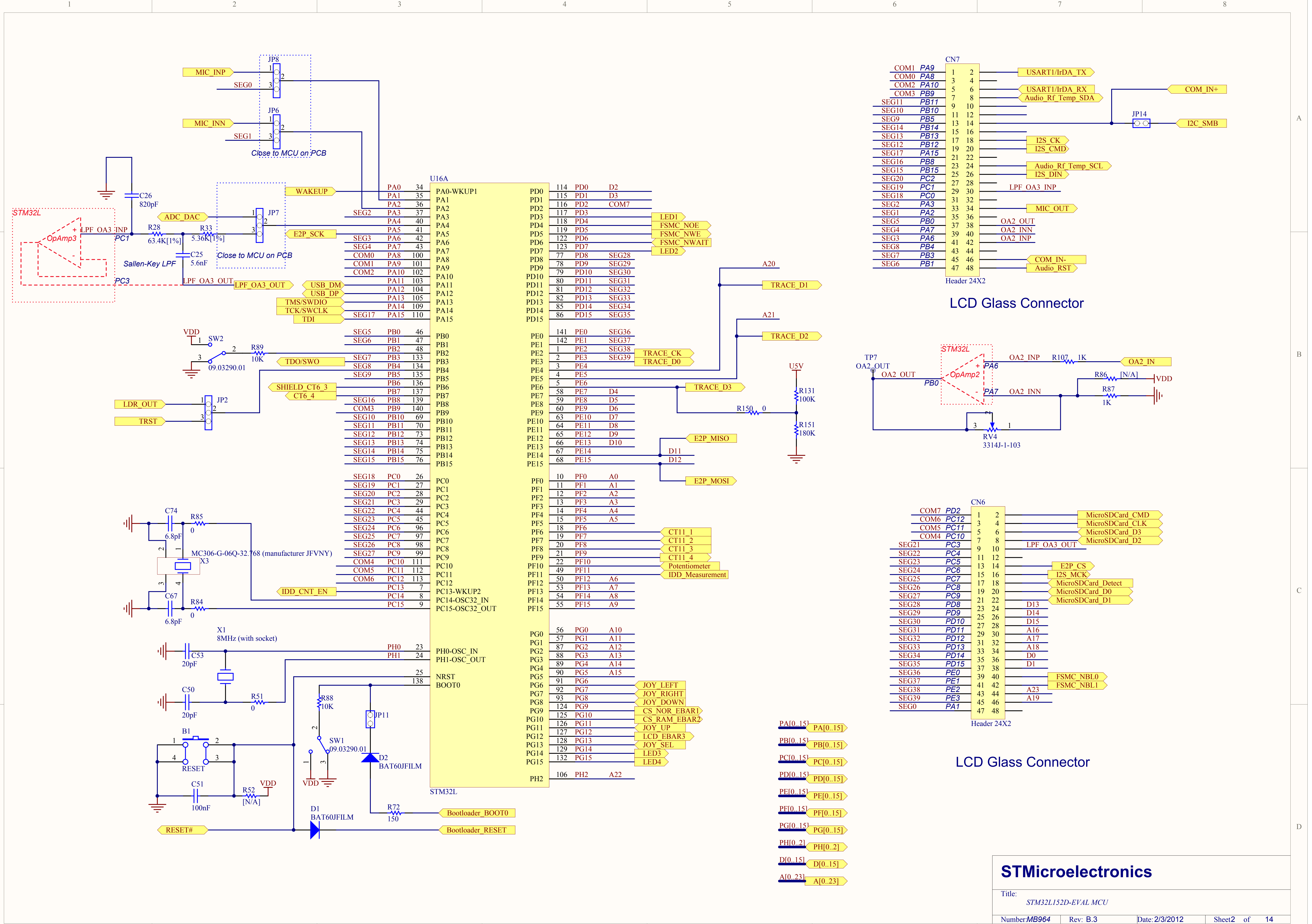
STMicroelectronics

Title: *STM32L152D-EVAL IDD_Measurement*

Number: *MB964* Rev: *B.3* Date: *2/3/2012* Sheet *7* of *14*







A

B

C

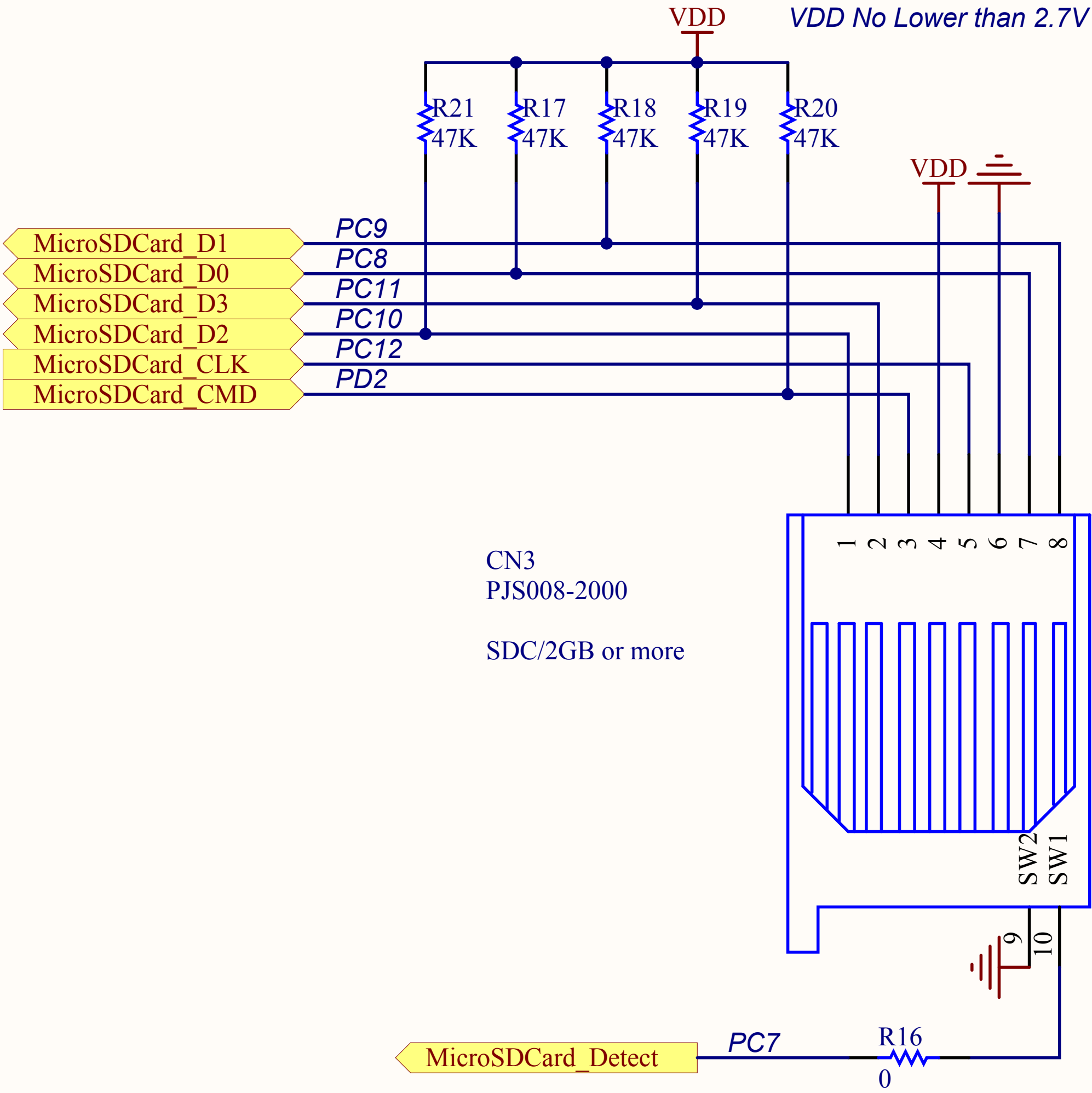
D

A

B

C

D



MicroSD card

STMicroelectronics

Title:
STM32L152D-EVAL MicroSDcard

A

B

C

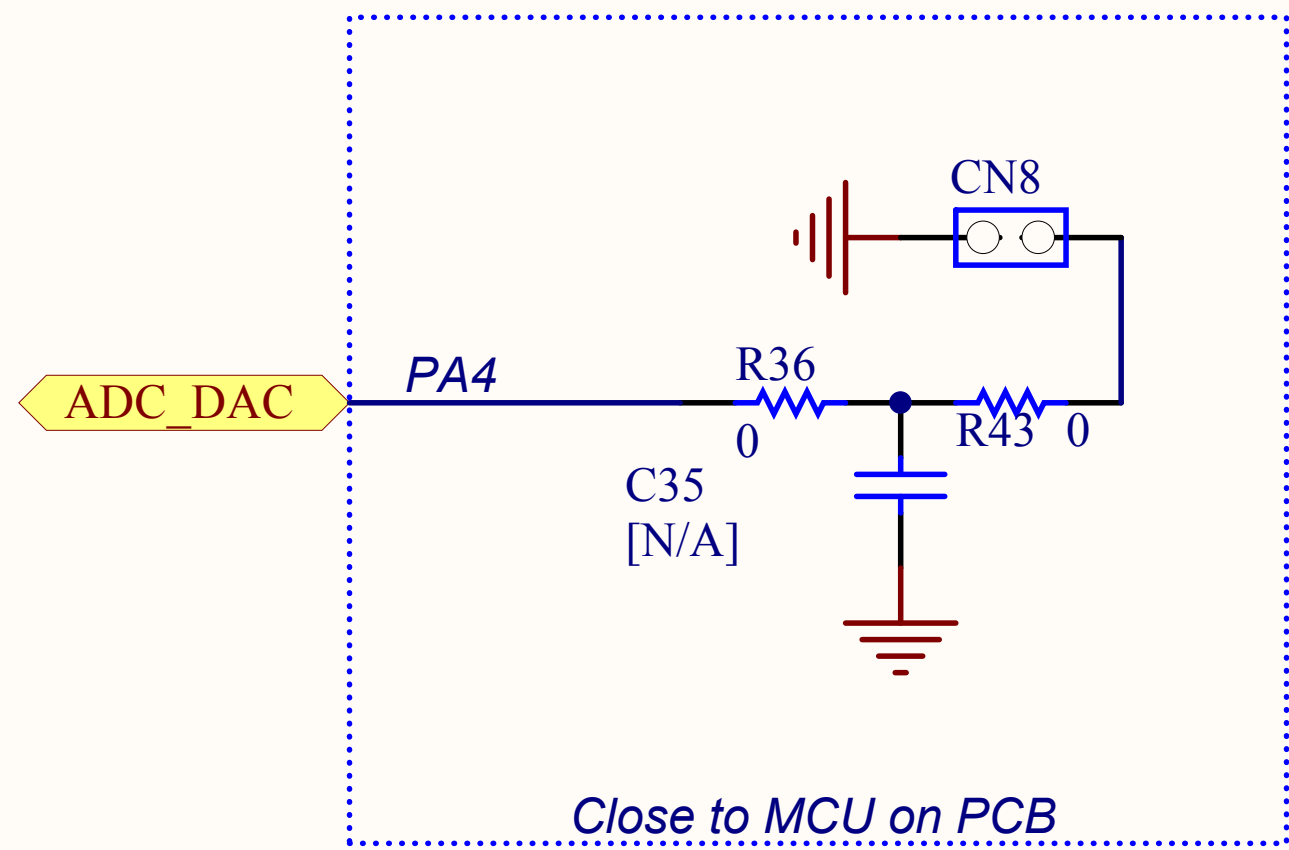
D

A

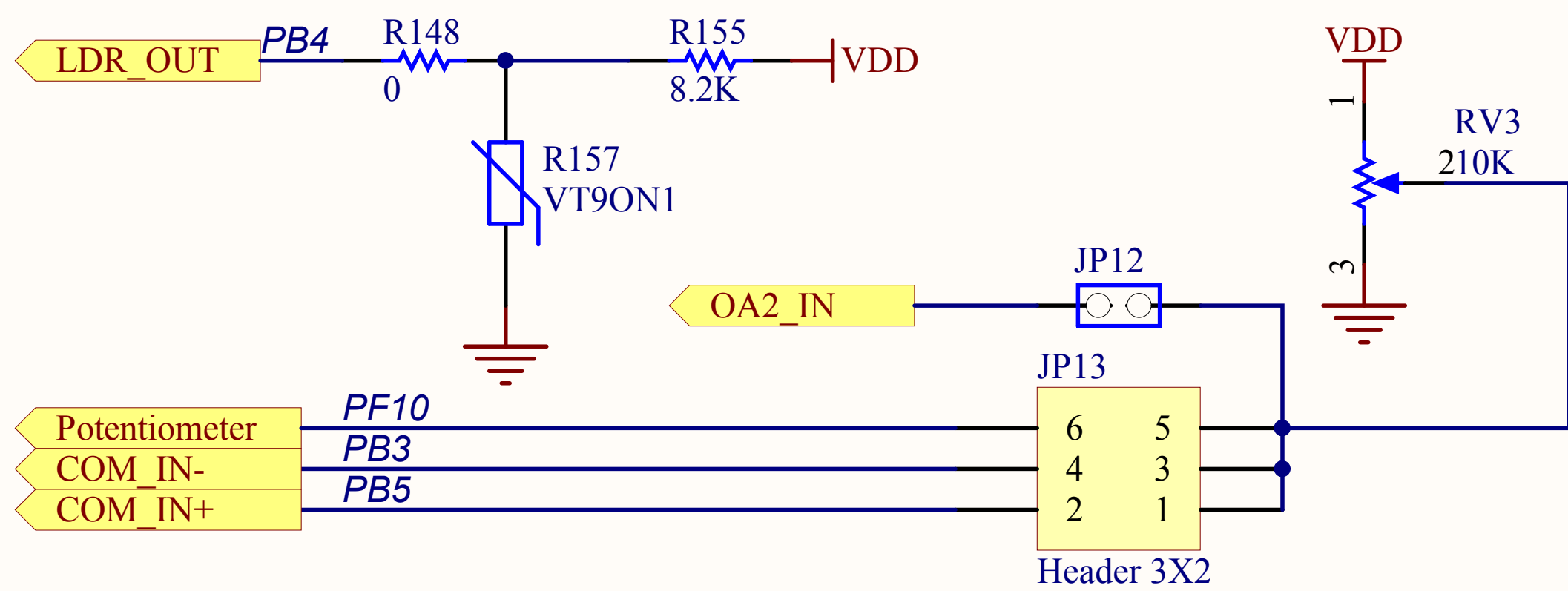
B

C

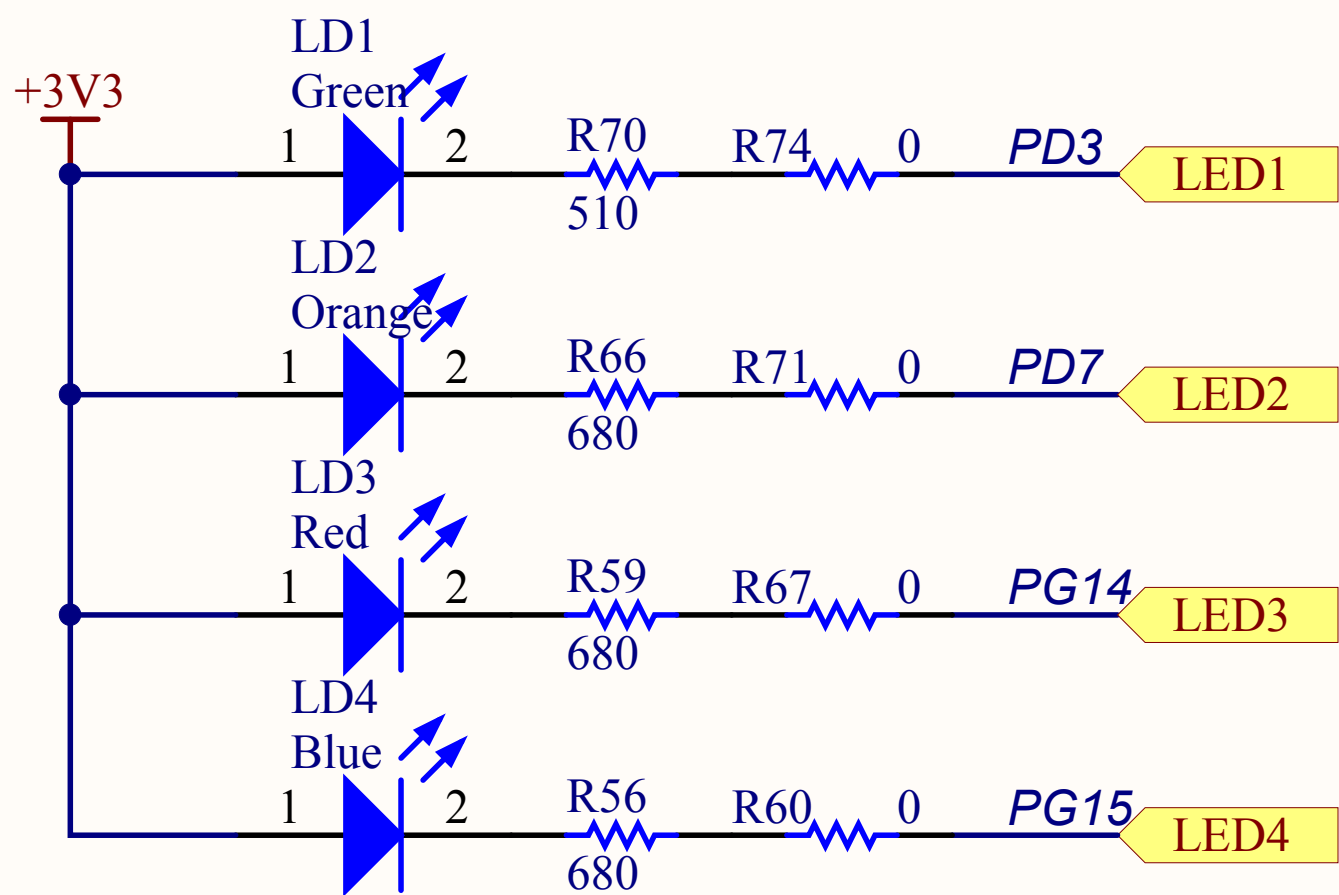
D



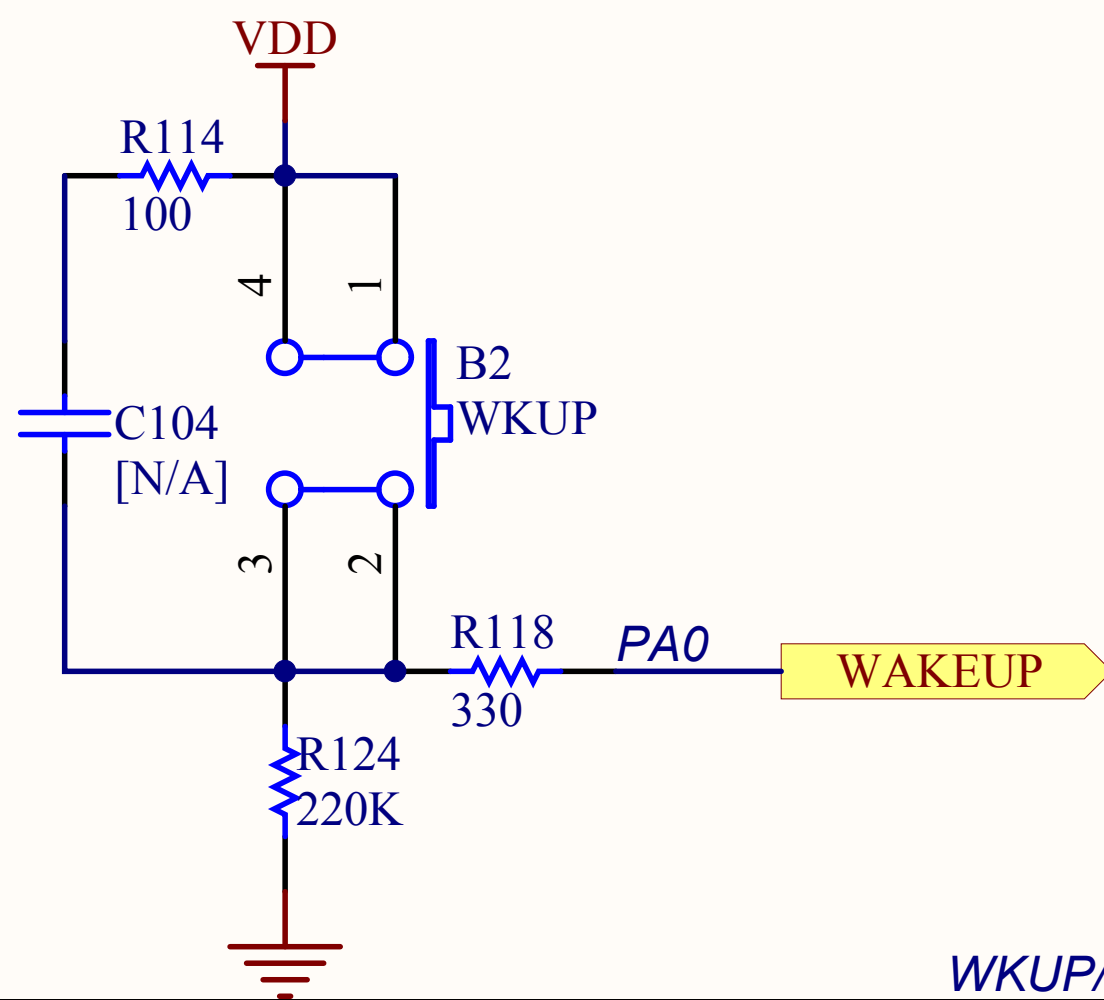
ADC&DAC connector



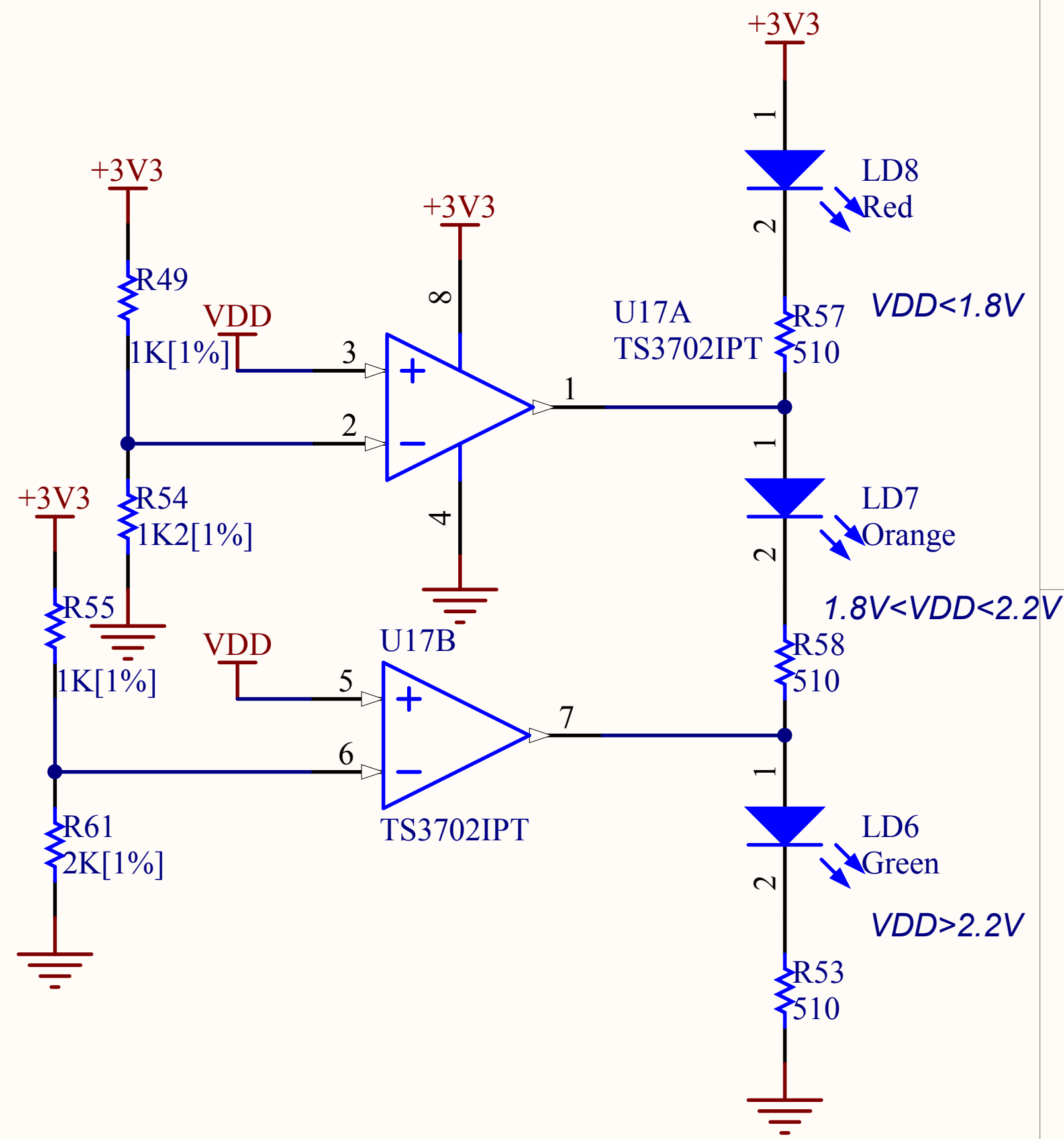
Potentiometer/Comparator



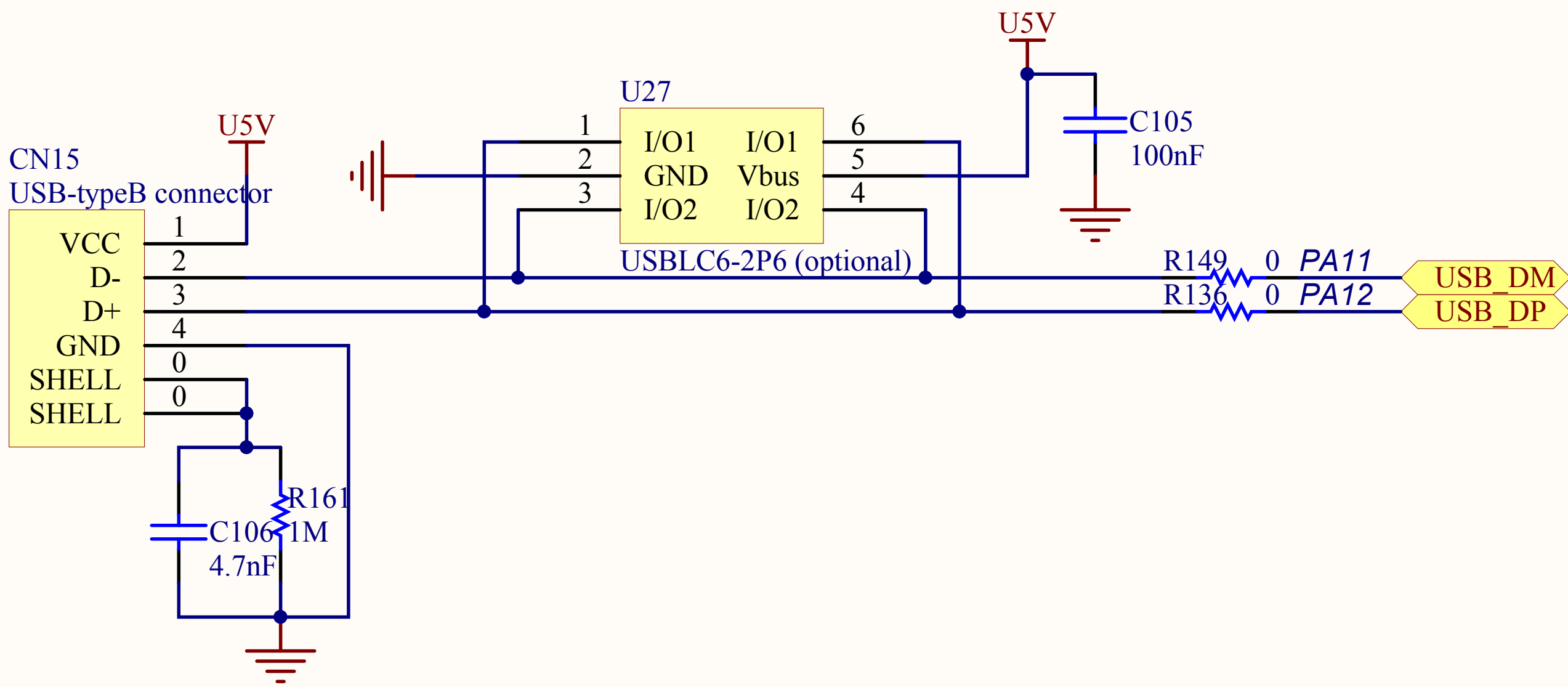
LEDs



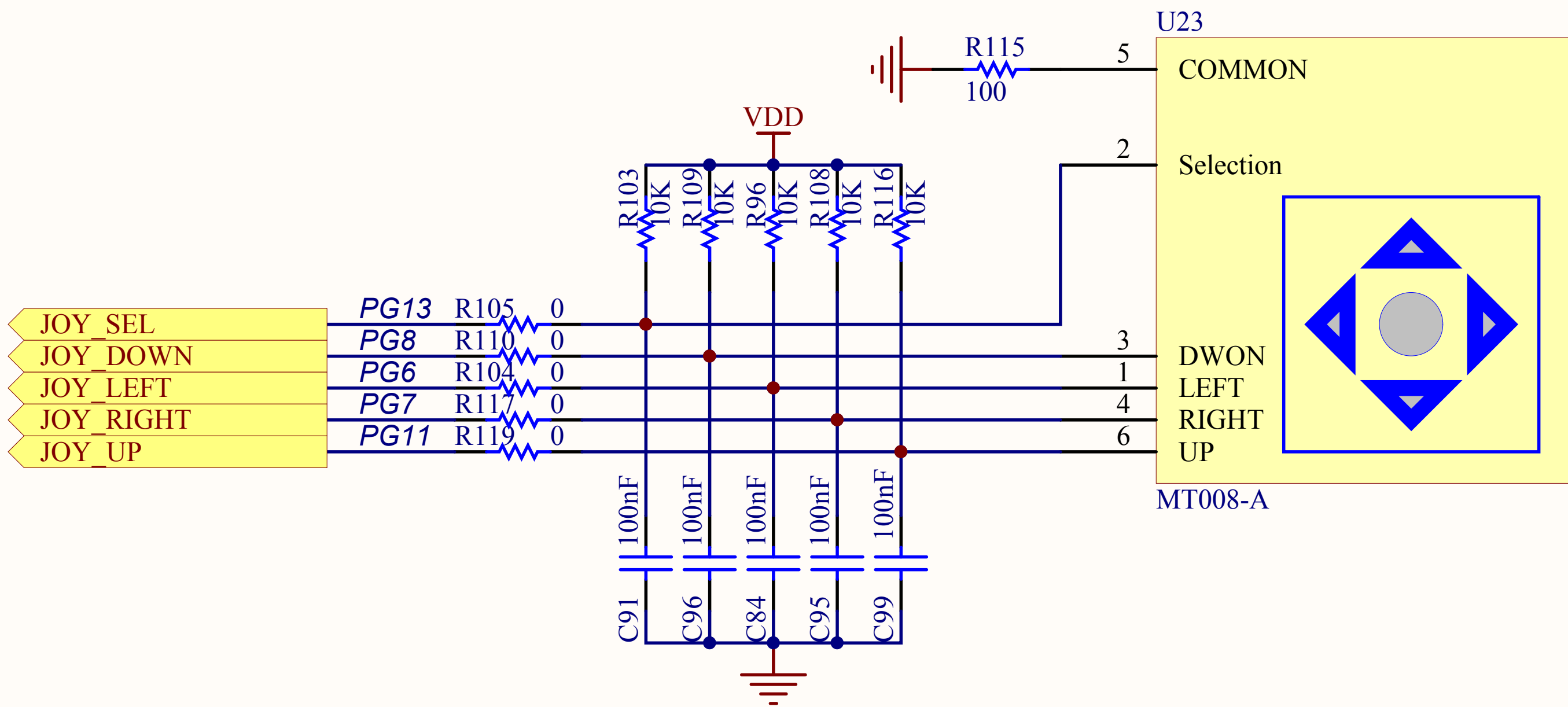
WKUP/TAMPER Button



Low Voltage LED



USB

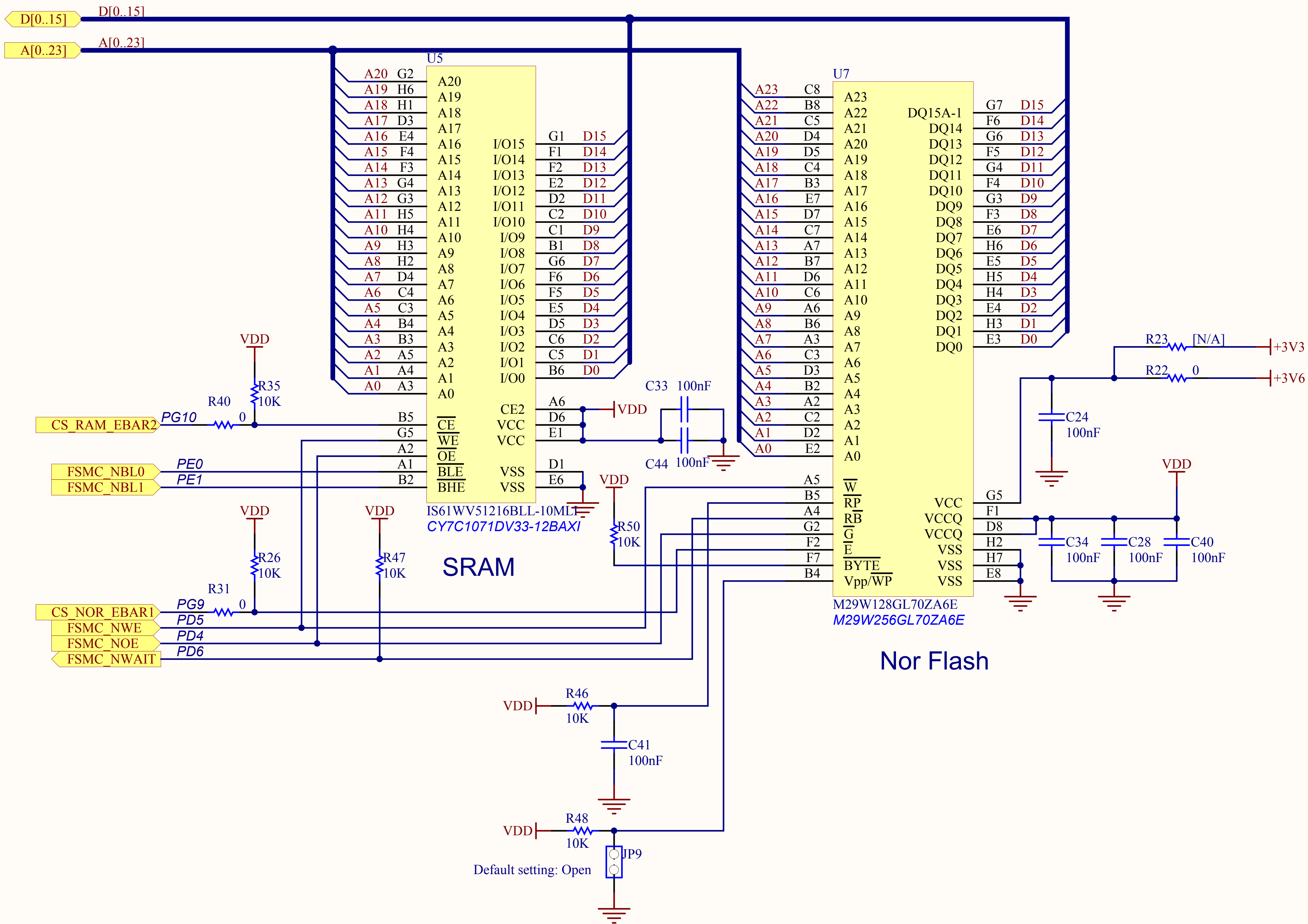


Joystick

STMicroelectronics

Title:
STM32L152D-EVAL Peripherals

Number:MB964 Rev: B.3 Date:2/3/2012 Sheet4 of 14



A

B

C

D

2

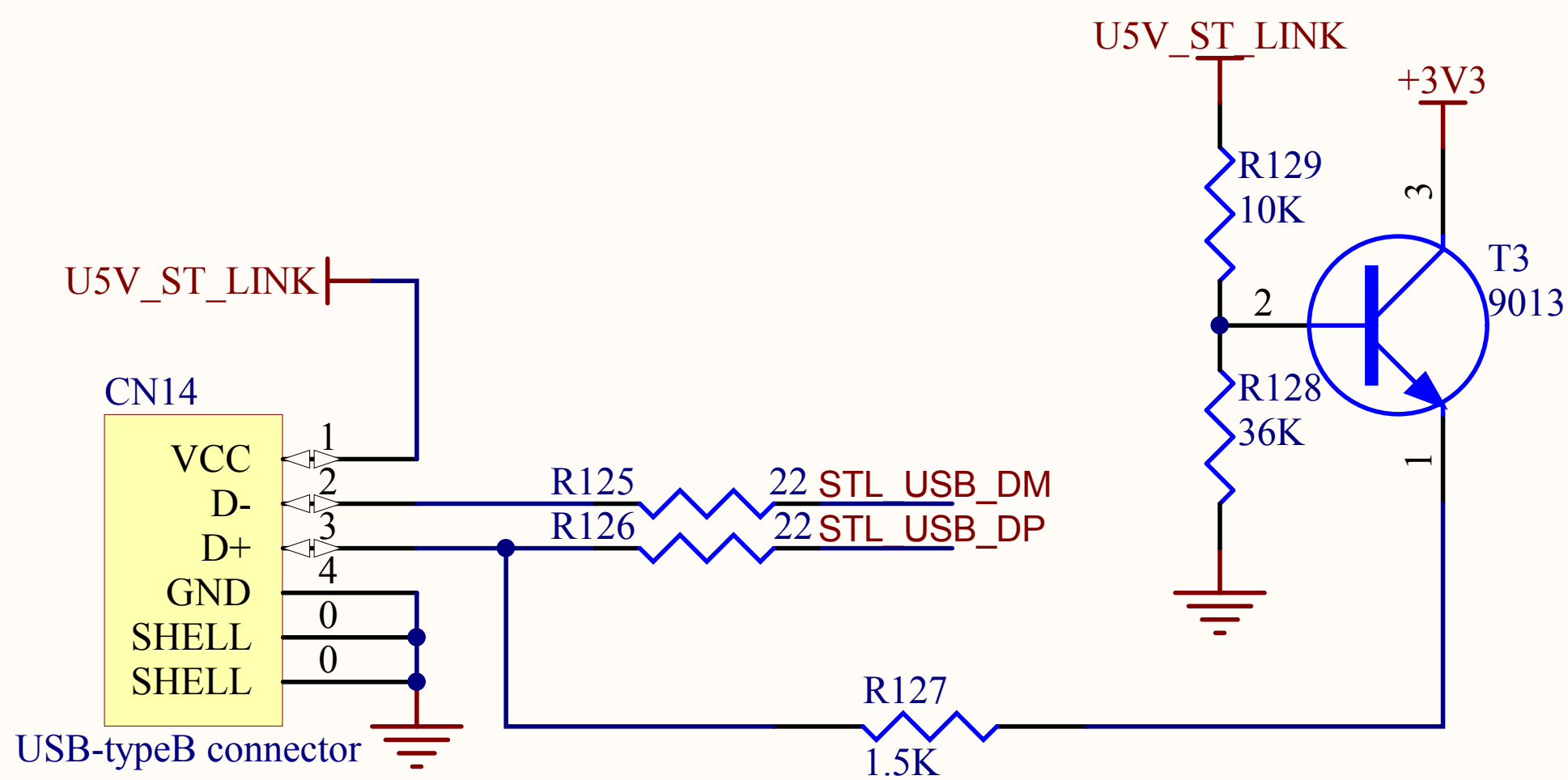
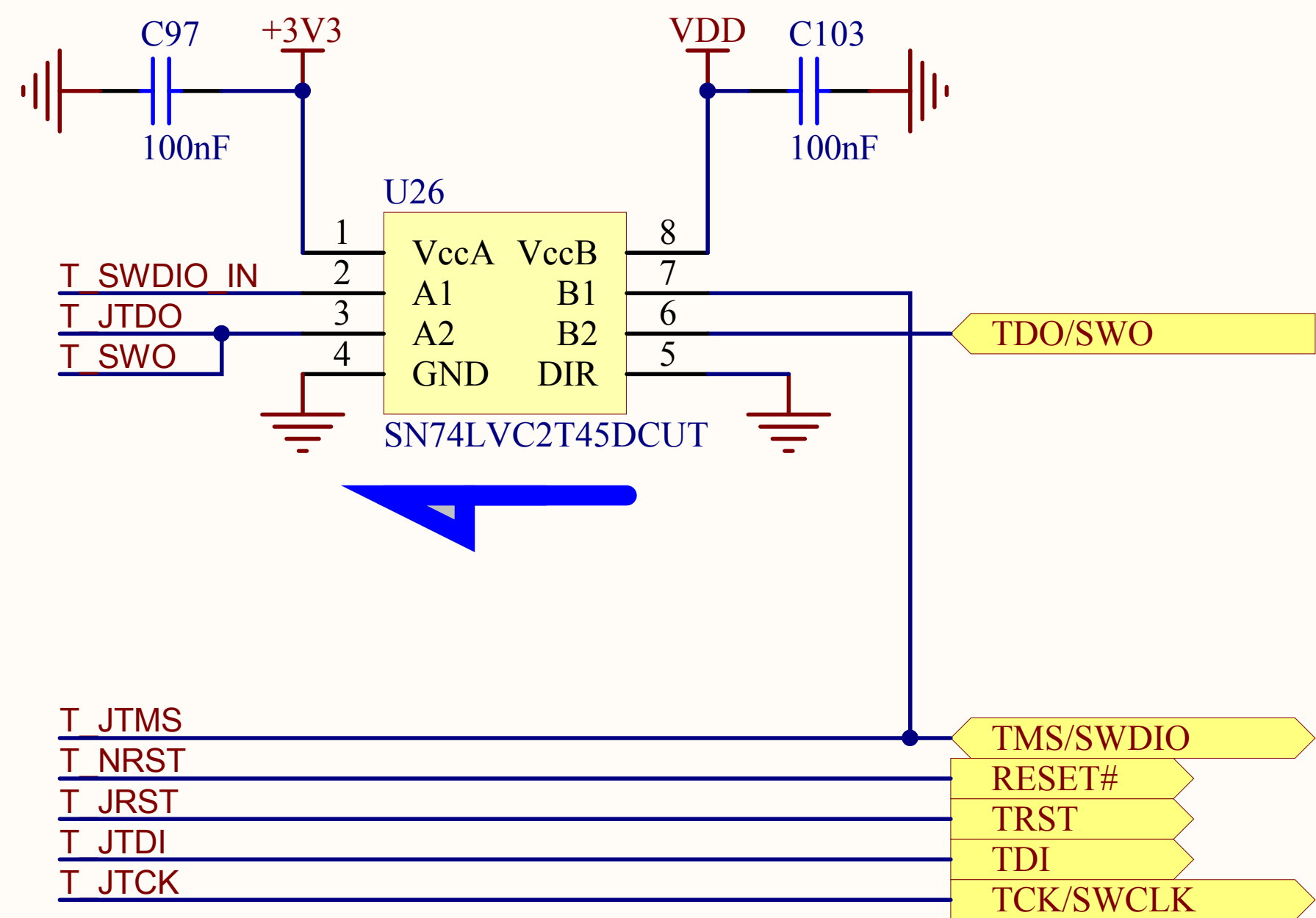
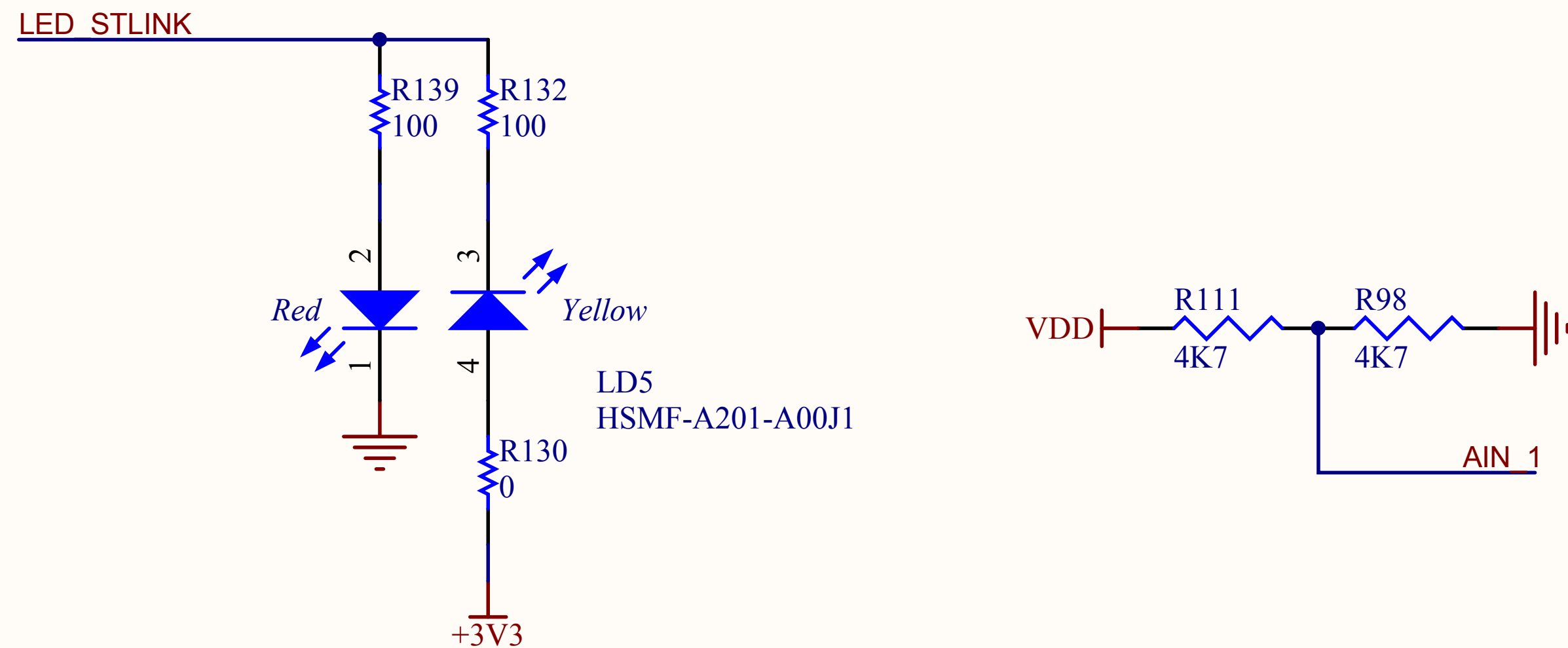
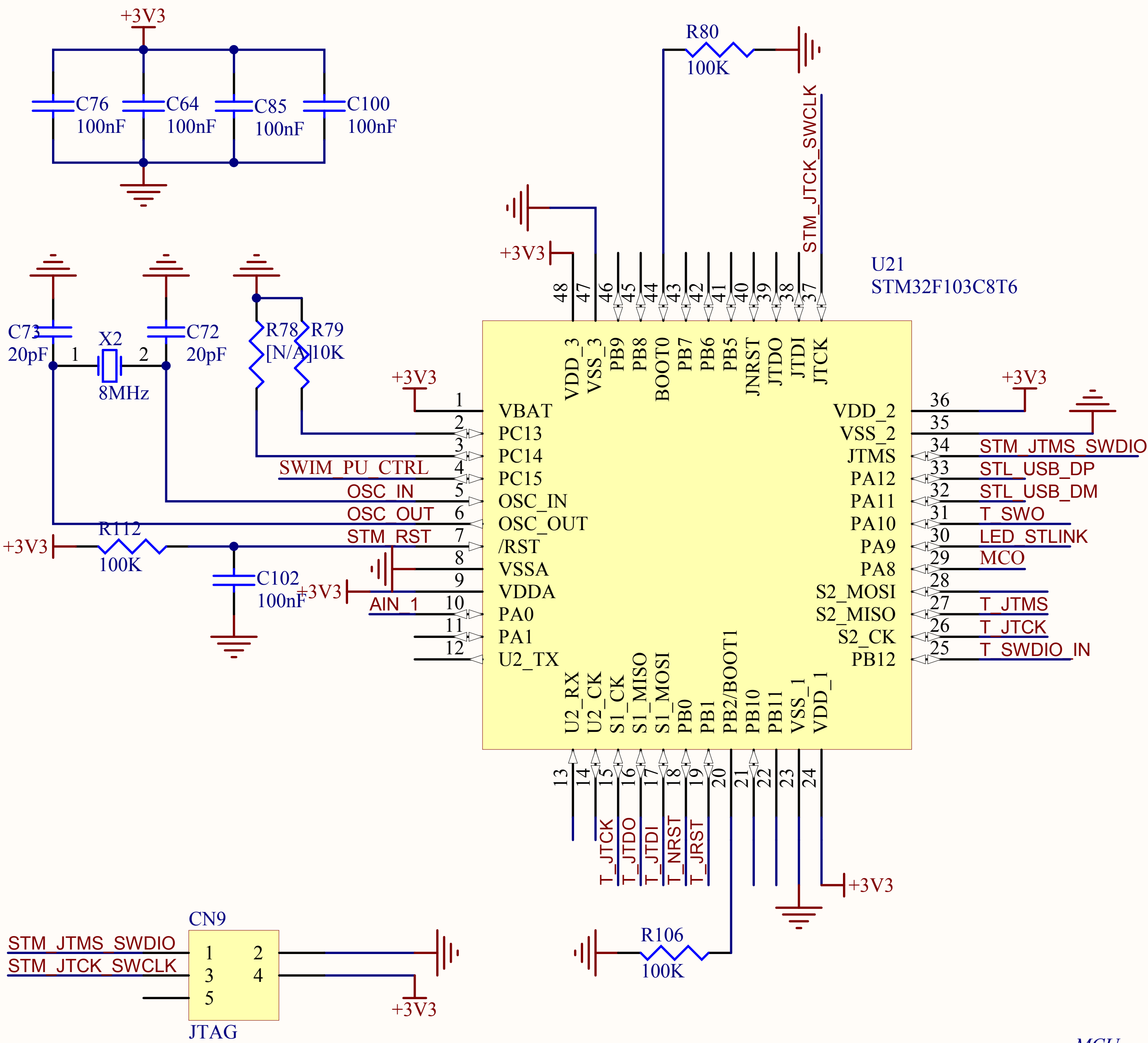
2

3

3

4

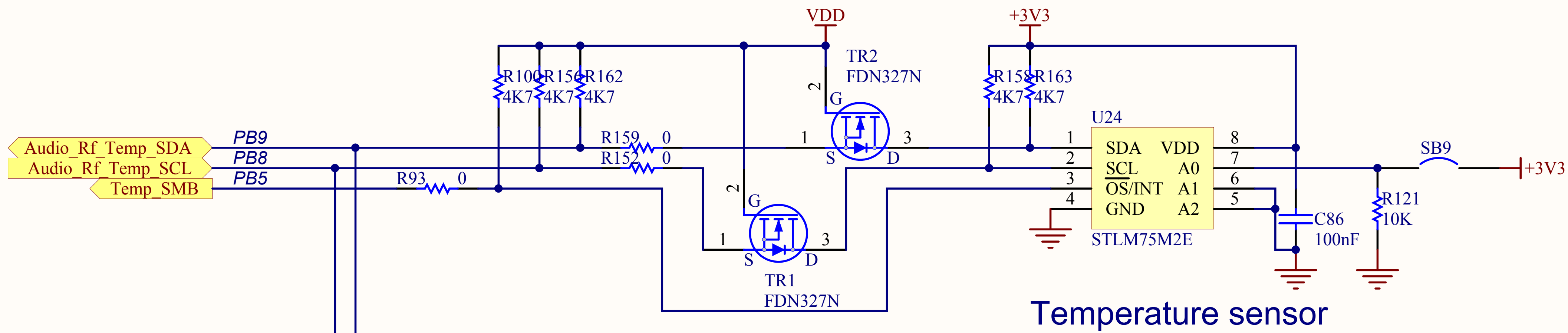
4



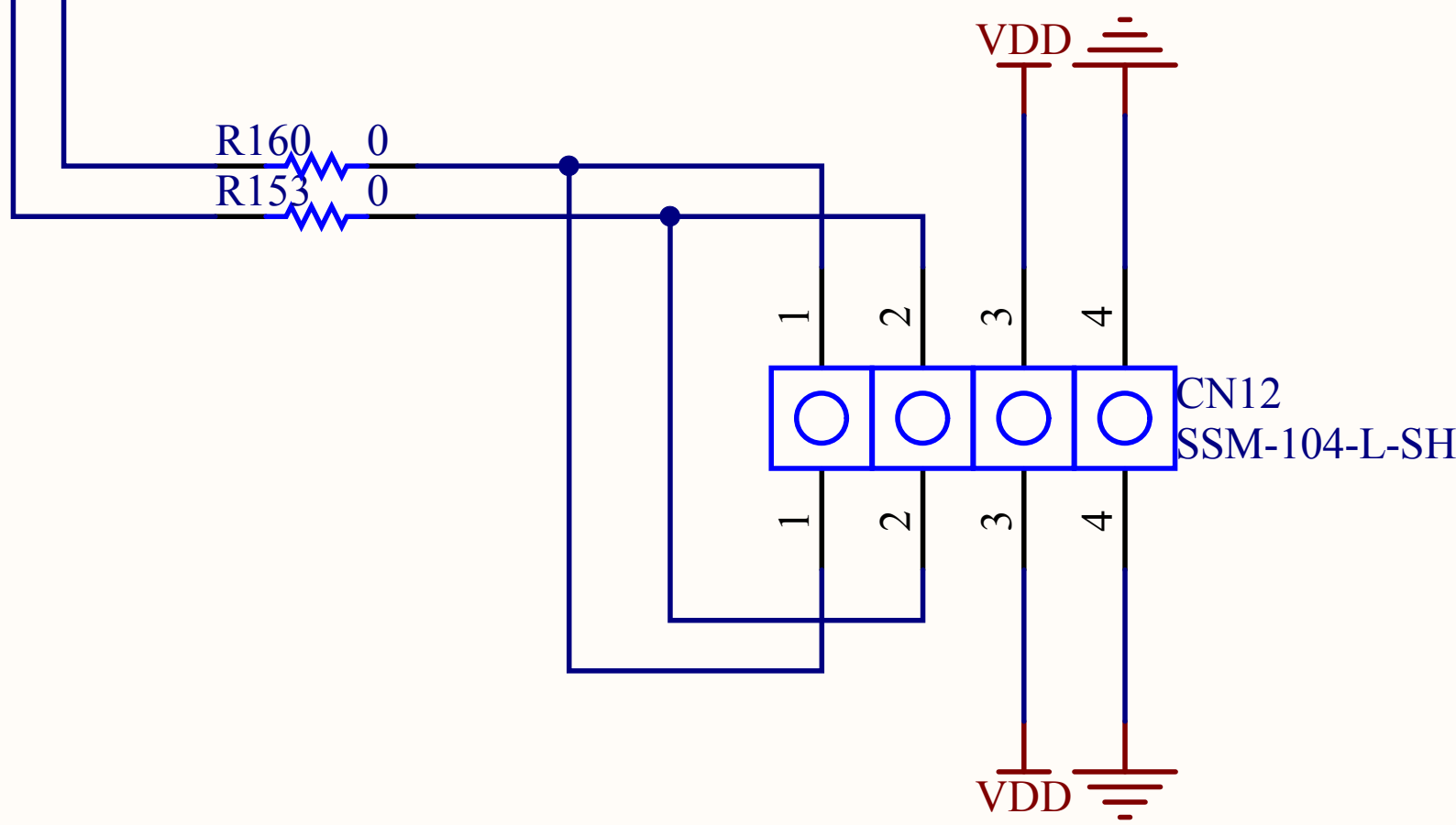
STMicroelectronics

Title:
STM32L152D-EVAL ST_LINK (JTAG only)

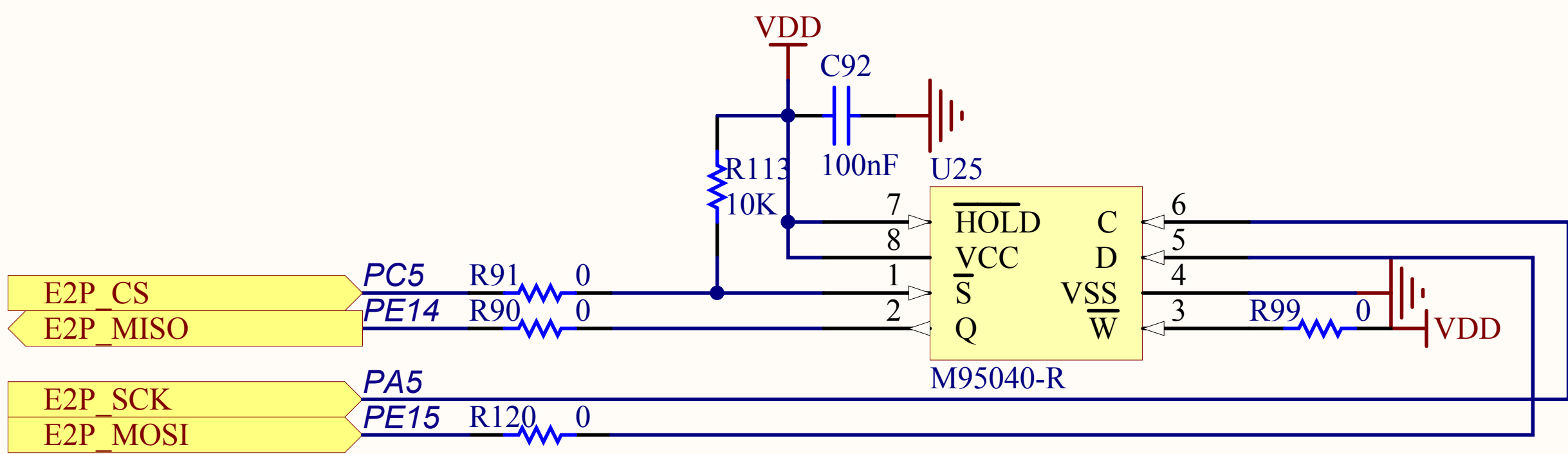
Number:MB964 Rev: B.3 Date:2/3/2012 Sheet8 of 14



Temperature sensor



E2PROM RF CONNECTOR



SPI EEPROM

STMicroelectronics

Title: STM32L152D-EVAL TemperatureSensor&RF E2PROM& SPI Flash

Number:MB964 Rev: B.3 Date:2/3/2012 Sheet9 of 14

A

A

B

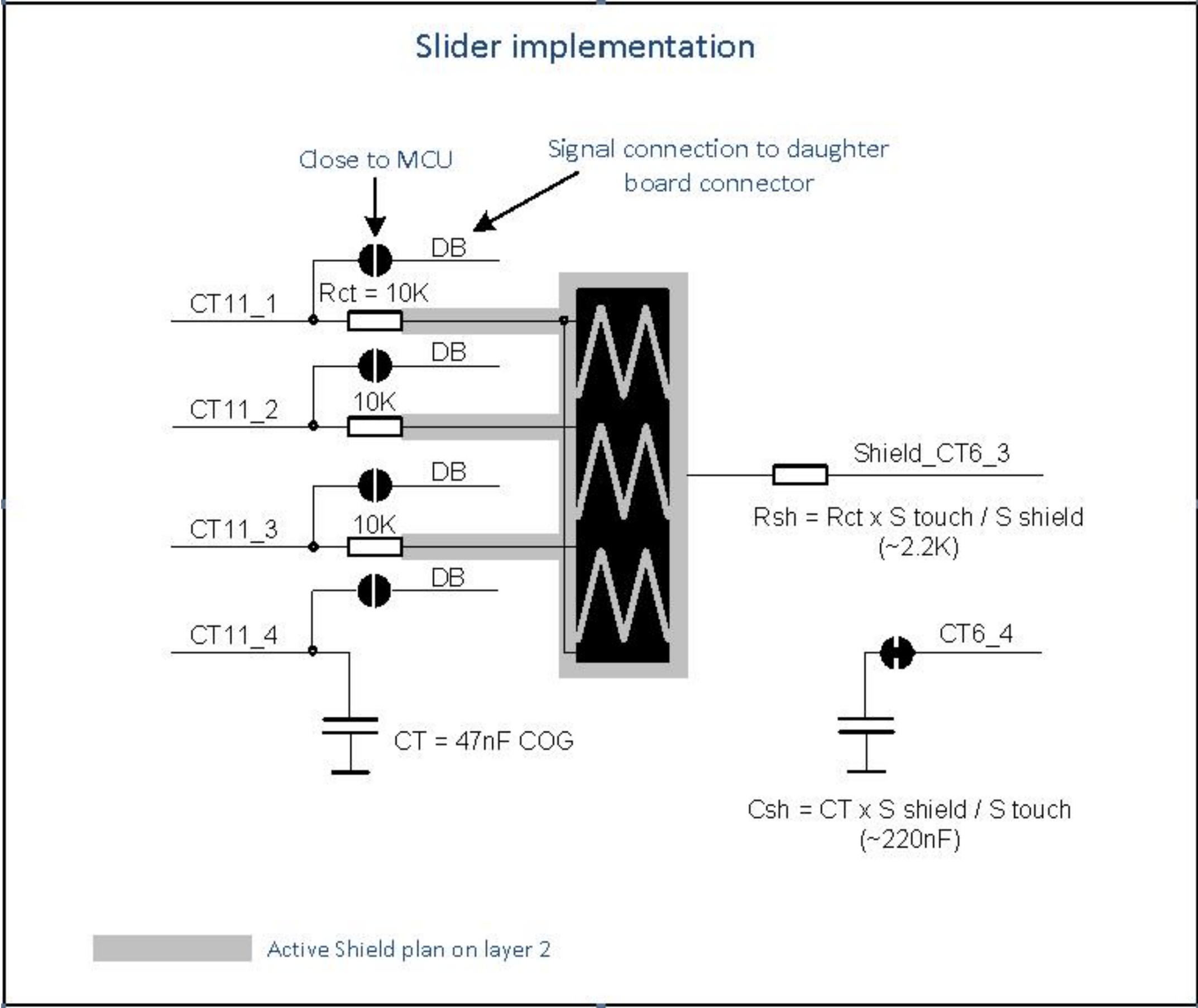
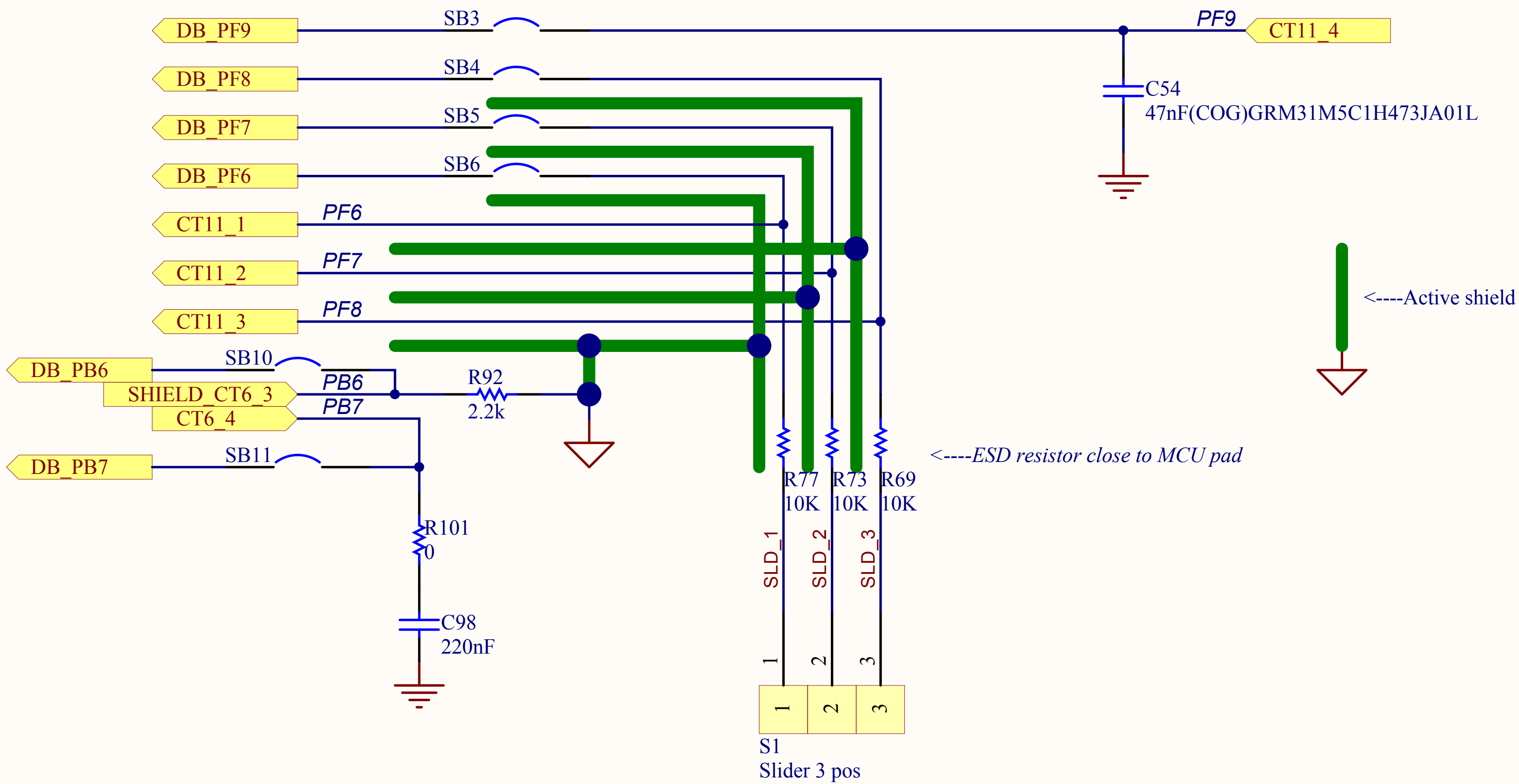
B

C

C

D

D



STMicroelectronics

Title: STM32L152D-EVAL Touch Slider

Number:MB964 Rev: B.3 Date:2/3/2012 Sheet14 of 14